

For information on  
how to join the  
pathway to employment  
Ring (097) 291 302.

**HARVEY AGRICULTURAL  
SENIOR HIGH SCHOOL  
AGRICULTURAL WING**



**PROSPECTUS**

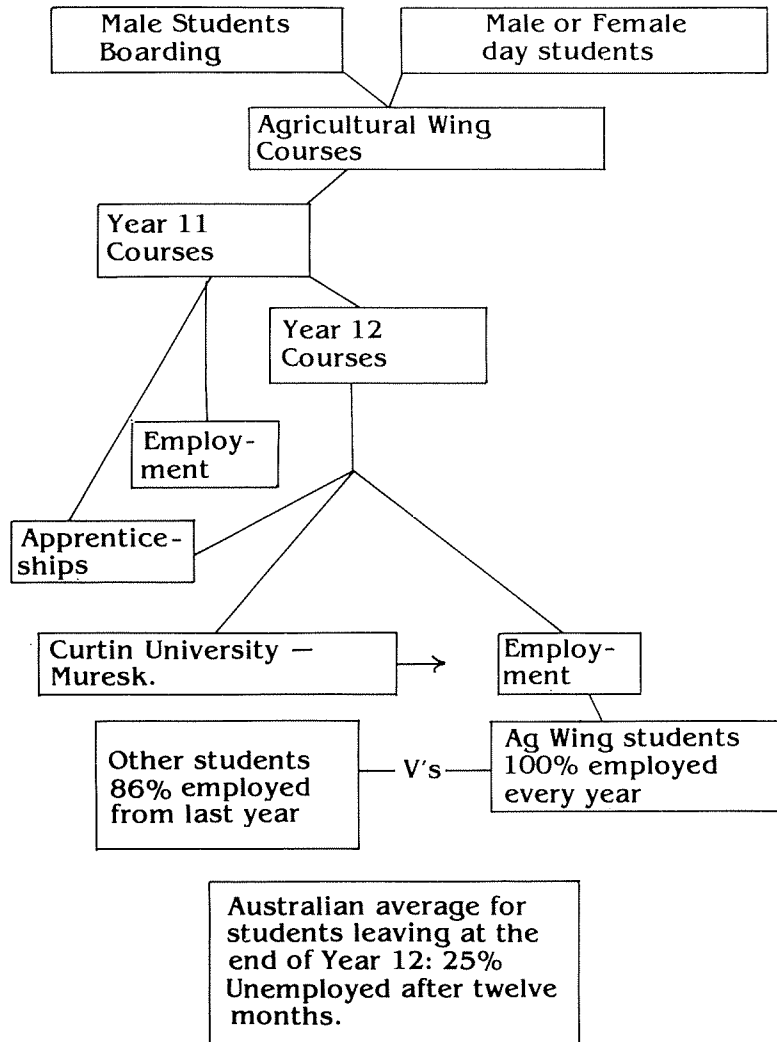


**Harvey, Western Australia  
Telephone 097 - 29 1302**



# AGRICULTURE

## THE PATHWAY TO EMPLOYMENT



## RESIDENTIAL ORGANIZATION

The school is a boarding institution with accommodation for 50 students and also takes students as non-boarders. Female students are welcomed as day students.

Housemasters supervise the students in the time outside school hours. All students are required to do a minimum of 1½ hours of homework on weekday evenings.

Recreational time is spent in voluntary periods of sport most weekday afternoons. Students from the school play Football, Cricket and Hockey in the local competitions.

On weekends, students are involved in many outdoor activities such as Survival Camps, Camping Trips on the Bibbulmun Trail, Motor-Cycle Riding, Swimming, Surfing and other sporting activities. Leisure activities include shopping on Saturday mornings in Harvey or Bunbury, dances, barbecues, pool, tennis, trips to car and motorcycle racing, drag racing excursions to shows, roller skating in Perth and Bunbury, etc.

Students are involved in normal upper school sports with Town Wing students each Wednesday afternoon and regular full school assemblies. The Agricultural Wing students also participate in house and inter-school sporting competitions.



Crops & Pastures - Silage Making

---

## THE COURSE

### 1. AIM of the COURSE

The role of the School is to provide a mix of theoretical and practical training for students who intend to return to farming. Some students also use the Course to gain entry to Muresk Institution of Agriculture, whilst others use the course to gain entry to a variety of apprenticeships.

### 2. The COURSE

Students study Year 11 and Year 12 units in the following subjects:

#### THEORY

##### SUBJECTS:

Senior English  
Animal Husbandry  
Crops and Pastures  
Farm Economics and Management  
Applying Mathematics (Yr 11)

##### MANUAL ARTS:

Farm Constructions  
Farm Vehicles and Machines

##### FARM:

Farm Practice

N.B. All of the above subjects are non T.E.E.

**IMPORTANT:** High School Graduation requires a student to pass an English subject at Year 12 Level to satisfy literacy standards.

### 3. Theory Subjects

Theory subjects occupy 50% of course time with four subjects being taught: Animal Husbandry, Crops and Pastures, Farm Economics and Management and Senior English. The objectives of these subjects look towards ensuring that basic principles are understood, as much as facts, thus providing an education of continuing value as agricultural technology and practices change.

**Farm Economics:** This subject examines a range of farm business Marketing, Record Keeping, Taxation and Budgeting, Computer Programmes and simulation games are employed to illustrate the more difficult concepts. Within Farm Economics, students in groups of 4 - 6 undertake various trials and projects in the form of "Study Groups". These include growing farm trees, feedlotting beef cattle, hydroponics, vegetable growing, etc.; and allow the student to pursue an interest not otherwise available in the mainstream subjects.

### 7. DRIVER TRAINING

Students are permitted to gain their licence through a registered driving school located in the town. Year 12 students receive priority, although Year 11 students may use this service.

### 8. FEES

Boarding fees charged are comparable with those charged in State High School Hostels.

### 9. ISOLATED CHILDREN ALLOWANCE

Student must satisfy the "isolated" provisions to qualify for the Allowance. (from nearest school providing Year 11 and Year 12 courses).

### 10. STATE GOVERNMENT BOARDING ALLOWANCE

All boarding students eligible to claim this allowance.

### 11. APPLICATION AND ADMISSION

Admission is by selection and application should be made on the form available from this School or from your school. Applications close on 30th September each year. Applicants must have completed Year 10 but students who have completed Year 11 are also eligible for entry.

Students who apply are selected on the following criteria:

- A genuine desire for a career in the rural or allied industries.
- Satisfactory completion of Year 10.
- A confidential report from student's previous school.
- An interview by the School Principal.

### 12. FURTHER INFORMATION

The School is keen to interview potential entrants either before or after a formal application is made. Parents should telephone the School to arrange a time for interview or to inspect the Campus.

For further information please contact:

The Principal  
Harvey Agricultural Senior High School  
South Western Highway  
HARVEY 6220 W.A.  
Telephone: (097) 29 1302

In addition, our Field Day is held in early November each year and you are welcome to attend and inspect the Schools facilities then.



Beef Cattle - Feedlot Weightgains



Sheep Husbandry - Shearing

---

**Crops and Pastures:** The aim of the Year 11 unit is to give the student a grounding in the principles, processes and identification of common plants; the soils in W.A.; soil conservation and inter-relationship with native and introduced agricultural plants; weeds and pests. A more in-depth study of the management practices associated with particular crops and pastures, conditions associated with their growth and nutritional requirements is undertaken in Year 12.

**Animal Husbandry:** Physiology, nutrition and reproduction of animals in general are studied as background leading to the examination of the management practices relevant to the major W.A. industries of sheep, pigs, cattle, etc.

**Senior English:** Students study reading, writing, media, literature and speaking with a view to improving their communication skills and to developing the student's awareness of himself and the world around him. Where possible, topics relevant to farming are used as examples within this subject.

The classroom continues to make considerable use of the School's farm by way of demonstrations of farm operations and basic skills. Students also make good use of the many off Campus facilities that are available in the surrounding district.

#### 4. MANUAL ARTS

Students attend the manual arts workshops for 25% of their time to develop practical skills and to gain experience in construction and maintenance tasks appropriate to farming. Further time is spent in the classroom covering essential theory topics.

**Farm Vehicles and Machines:** This subject incorporates the fundamental operating principles of engines and machines. Students are encouraged to recognise the application of the fundamentals taught and have the opportunity to gain a wide variety of practical experience from workshop projects. The well equipped workshop enables the bulk of repair work to be carried out at the School, with only specialist work being sent out. This gives students the advantage of working on vehicles that must "go" rather than just working models.

**Farm Constructions:** At Harvey, Farm Constructions is taught in the form of Metalwork, Woodwork and Building Construction. Most time in Farm Constructions is spent in metalwork and involves metal fabrication and welding where students acquire proficiency as they work on their own projects.

## BEEF HERD

The beef herd consists of 25 breeders. Hereford X Friesian cows,  $\frac{1}{3}$  naturally mated to a Hereford Bull whilst the remainder are artificially inseminated to either Limousin or Simmental. Calves and dams are weighted monthly to allow breed comparisons to be made and to assist in culling. Some beasts are fattened in a lot feeder.

## PIGS

The breeding herd consists of 6 sows - Large White and Large White X Landrace mated to a Large White and a Hampshire Boar or Durock as a terminal cross. Progeny for rations or sale are mostly carried through to baconer weight.

## SHEEP

The school has flocks of Merino, Romney and Romney X Merino of approximately 850 in total. The ewes are mated to Merino, Poll Dorset and Romney rams. The various breeds are compared in wood and prime lamb production and also provide the students with shearing and wool classing experience.

## POULTRY

The poultry unit contains 225 White Leghorn X Black Australorp and 225 New Hampshire X Black Australorp birds which are reared from day-old chicks. The birds are housed in cages and production is recorded.

A small batch of broilers are raised and dressed for use in the kitchen. Growth rates and food consumption are recorded to allow for an economical analysis.

---

## SLAUGHTERHOUSE

Students are involved in the slaughter of pigs, sheep and cattle. The butcher shop is producing a variety of cuts of meat. Students also learn how to produce bacon, ham, sausages and corned meats.

## ORCHARD

Various Citrus varieties are maintained under the sod culture principle. Students are involved with citrus budding for a take-home product. The school's policy on all aspects of Horticulture continues to be under review.

## VITICULTURE

A small vine yard has been established on the farm. Students are taught all aspects of vine management including pruning, budding and grafting.

## CROPPING

A number of forage crops are grown for silage and hay. To boost production from our irrigation land an area is treated with Roundup herbicide at 1/2 litre/hectare to retard kikuyu growth. This land is then sown with oats or barley over Winmerye and sub-clover. The crop is used for winter grazing then cut for silage.

Approximately 6 hectares of Bengier Swamp is sown to Sudax. This crop is to supplement the school's hay supply, and is ensiled at the home block, or used as green chop.

## POTATOES

The students grow the total school requirement. Different varieties being grown are Delaware and Kadema. The potatoes are planted in January, June/July and November on the home property.

Students in Year 11 work through a series of graded exercises leading up to the design and construction of a major project in Year 12.

Students have 3 hours of woodwork per fortnight. Both year groups are asked to design and manufacture at least one piece of furniture. The design must incorporate either frame construction (tables, stools, etc) or carcass construction (cabinets, chests of draws, etc).

In Building Construction, students are involved in a number of major and minor construction projects on the Campus (sheds, brick walls, concreting, etc.)

### 5. FARM PRACTICE

Farm Practice: Students are allocated in rotation to each of the various farm sections, where they participate in routine and seasonal operations. This practical work is supplemented by the comprehensive programme of demonstrations of farm operations.

Proficiency tests are conducted for specific selected skills, with the emphasis on correct procedure and understanding rather than speed.

### 6. ASSESSMENT AND CERTIFICATION

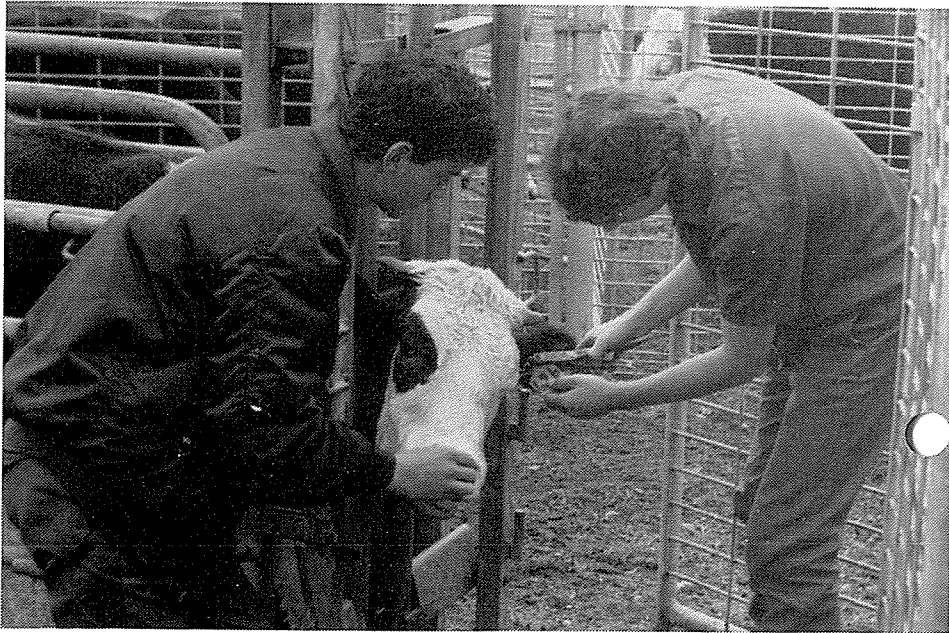
Non T.E.E. subjects are school assessed, but moderated by the Secondary Education Authority. Students receive the Certificate of Secondary Education at the end of the course and gain High School Graduation if successful in sufficient subjects.



Horticulture - Citrus Growing



Viticulture - Pruning



Cattle Husbandry - Beef Cattle

## THE FARM

General farm policy is recommended by the Advisory Council and is implemented by the Farm Supervisor. The farm consists of approximately 200 hectares of which 12 are irrigated. Included in the 200 hectares is a temporary lease of 20 hectares on the golf course. The school also has the use of a 4 hectare block at Cookernup.

An arrangement has been struck with the Department of Conservation and Land Management for the school to farm an area of Benger Swamp and 22 Ha of Reserve land west of Harvey.

## DAIRY HERD

The farm runs a herd of about 20 Stud Holstein-Friesian milkers. Foundation stock for the herd were donated by members of the Friesian Cattle Club. Full production records are maintained. They are all artificially inseminated. A proportion of the herd (lower producers) to Poll Hereford semen to produce replacements for the beef herd.



Farm Tractors & Machinery



## STUDENT POULTRY ENTERPRISE

This enterprise is run by the students and supervised by Teachers. Over 500 broiler chickens are grown from one-day old chicks for 7 to 8 weeks in an intensive deep-litter shed, one shed full per term. Commercial crumbles and pellets are fed, and water is by an automatic gravity-fed system. The birds are slaughtered at about 2Kg in weight (dressed) by the students, with the aid of a mechanised plucker.

## GENERAL COMMENT

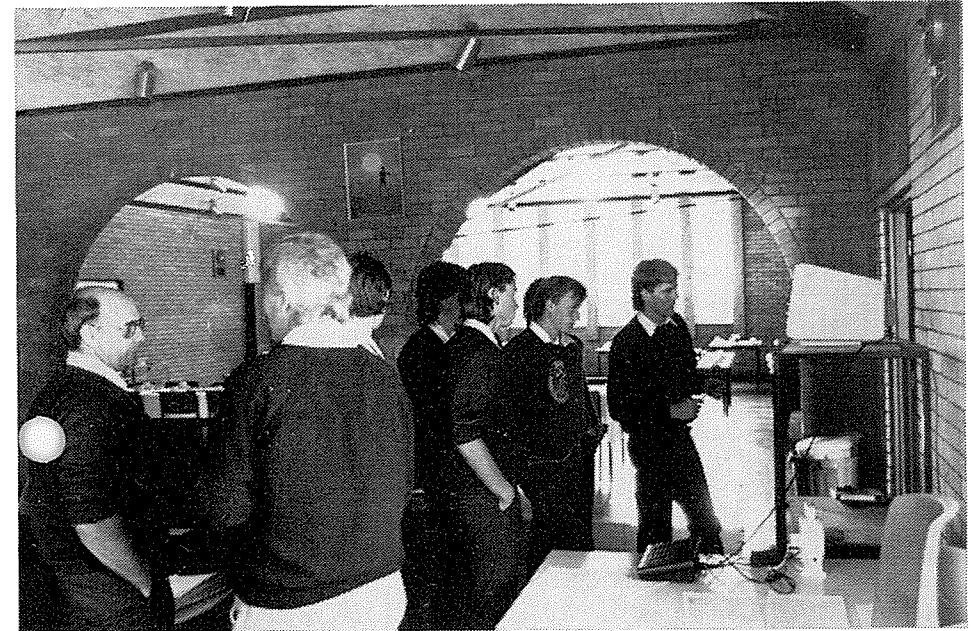
Students spend approximately half of their time in the classroom and in addition studies in these subjects are supplemented by practical activities on the School Farm. Excursions are made to local farms, associated industries and field days.

In addition, Year 12 students' experience is broadened by students staying on a local farm for two weeks gaining first hand experience of farm management on a commercial enterprise.

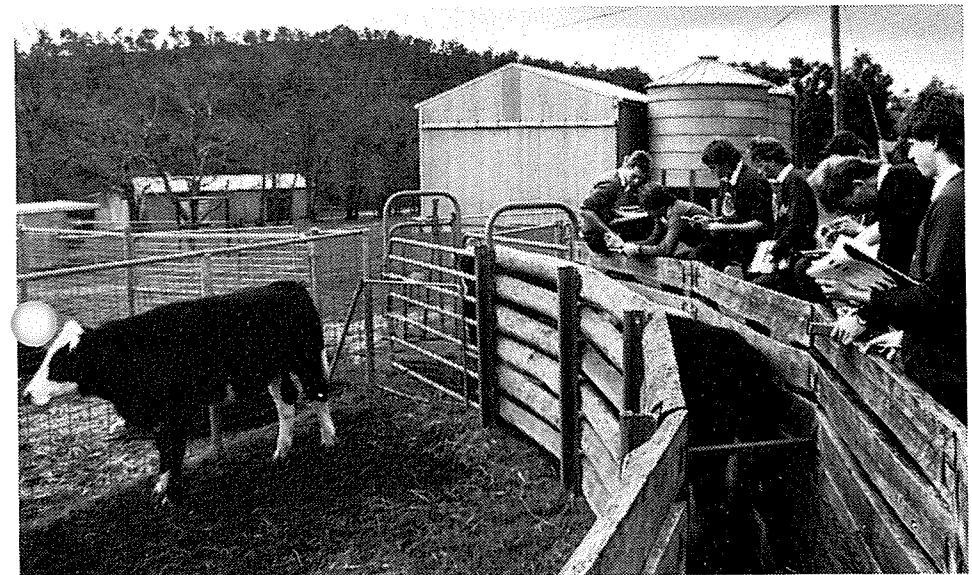
Lectures are presented by visiting guest speakers from the Agricultural Department on topics such as animal health, Declared Pests, weed control, soil conservation, soil sampling, plant sampling, etc. Officers of the Bush Fires Board lecture and demonstrate techniques for the prevention and control of bush fires. In addition, are able to obtain the services of the Computer Aided Livestock Marketing Group who run a course for our Year 12 students.

All students receive the Department of Agriculture's 'Farm Notes' to keep them abreast of the latest developments in agriculture.

Students are encouraged to use the Agdex file, journals and reference collection in the school's library in the compilation of regular written assignments.



Simulated stock purchase using the C.A.L.M. computer system.



Students assessing livestock "on the hoof".