

**HARVEY AGRICULTURAL  
SENIOR HIGH SCHOOL  
AGRICULTURAL WING**



**INFORMATION  
BOOKLET  
1987**



**Harvey, Western Australia  
Telephone 097 - 29 1302**



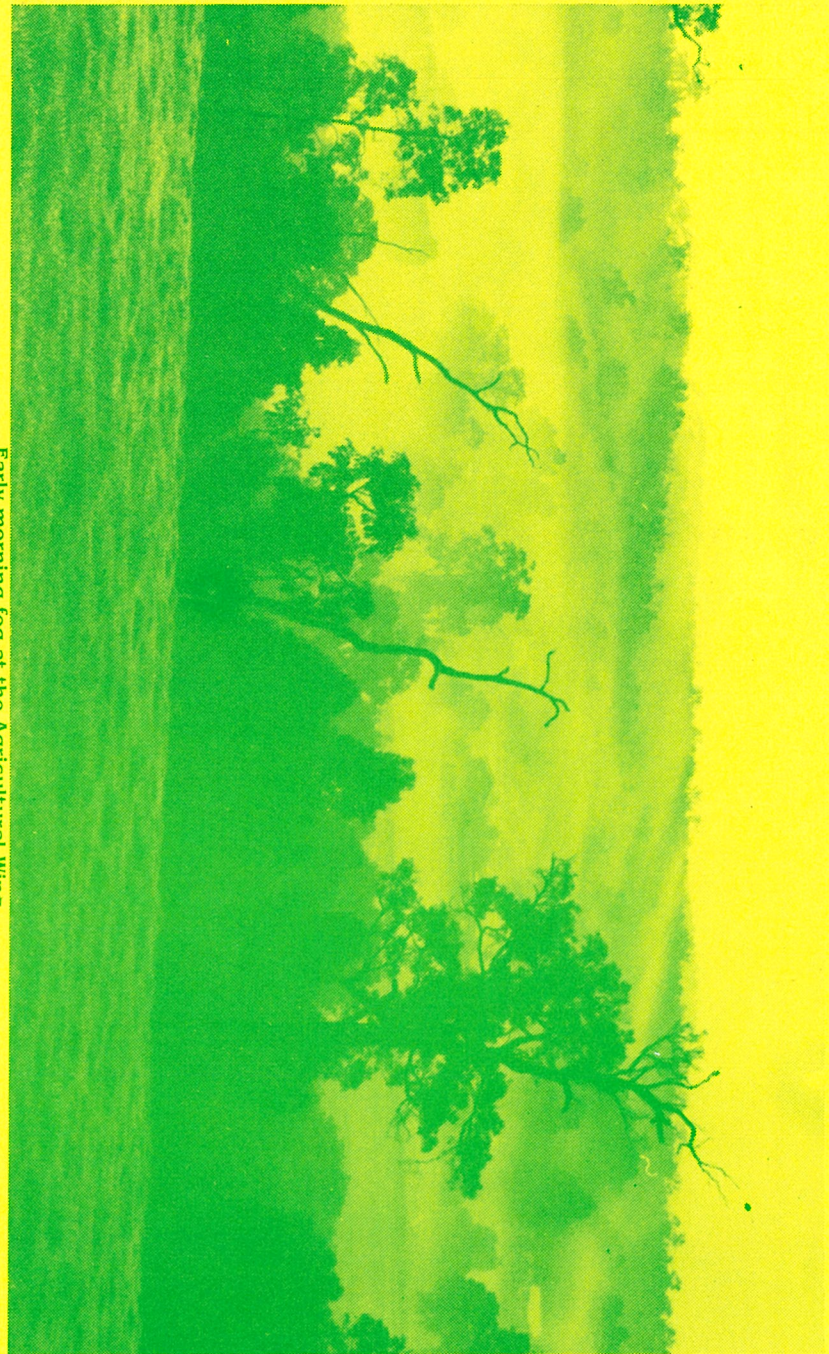
Mr. Brian Wansbrough



**PREFECTS**

(Standing): R. Morgan, Mr. A. Bolton (Senior Master), S. Lewer.  
Front: F. Longbottom, G. Jones (Capt.), D. Forrest (V-Capt.), A. Venn.

Early morning fog at the Agricultural Wing.



---

For information on how to join the  
pathway to employment  
Ring Mr. Adrian Bolton  
(Senior Master)  
on  
(097) 29 1302

---

## FROM THE PRINCIPAL 1988 and Beyond

Agricultural Education like all areas of Education is under increasing scrutiny to be more cost effective and serve its clientele more efficiently in a period of rapid change.

This does not infer in any way that Harvey Agricultural Wing has not serviced the farming community well over thirty years. On the contrary, many Harvey ex-students now are respected leaders in a wide range of vocations, particularly in areas of agriculture.

The fact is however, that the Government is asking all areas of public expenditure to be justified for effectiveness and within that Agricultural schools are being asked to examine their objectives and see if they can do it better.

During 1987 Harvey did exactly that and developed a forward planning document aimed at taking the school to the end of the 20th century.

Included were concepts of increased specialisation in Year 12, the inclusion of girls as day students, the possibility of a 50 week school year or, a third year for more talented students and a wide range of other changes.

Some are already in operation, three girls will be day students in 1988. Other changes will be examined and decisions made during the 1988 school year.

There is no doubt that agriculture will always be critically important to the nation's economy. Agricultural education will continue to have a responsibility to train the farmers of tomorrow in the modern technologies of farming. At Harvey the planning is well in place to meet the challenge of the next ten years.

BRIAN WANSBROUGH,  
Principal

# HARVEY AGRICULTURAL SENIOR HIGH SCHOOL

## Agricultural Wing

### ADVISORY COUNCIL:

J. Blackburn  
L.G. Knight  
W.K. Russell

A. Cunningham  
J.M. Lowe  
D.E. Vass

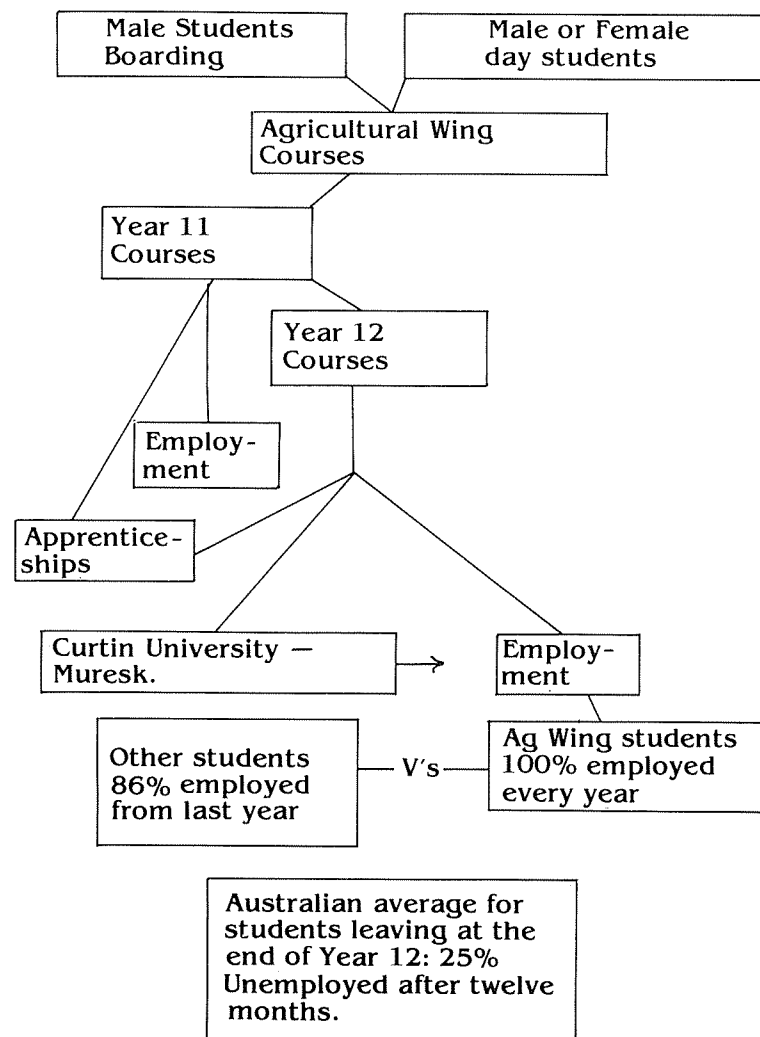
I.R. Eckersley  
I.W. Manning

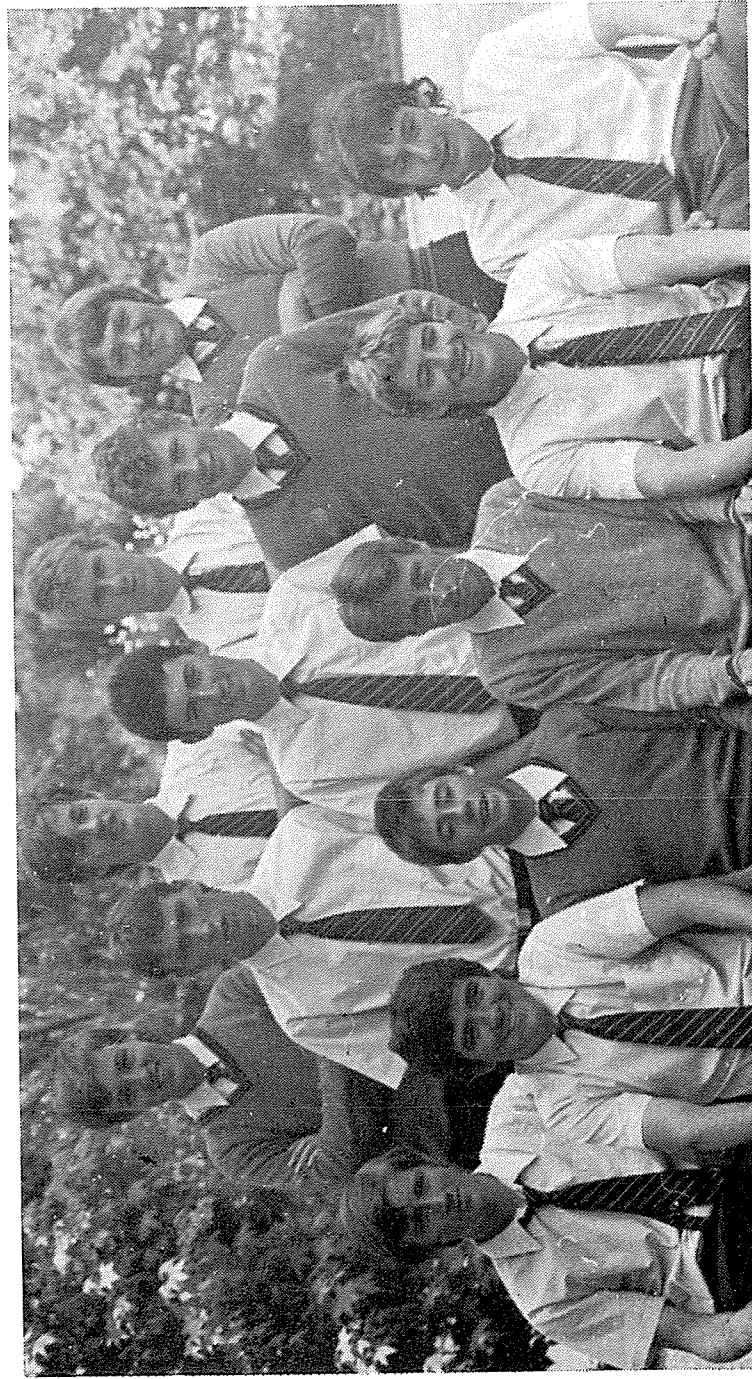
### STAFF:

B. Wansbrough . . . . Principal  
A. Bolton . . . . . Senior Master  
P. Egerton-Green . . . Farm Supervisor  
L. McArthur . . . . . English  
P. Allen . . . . . English  
G. Hepworth | . . . . Agriculture / Housemaster  
R. McManus . . . . . Manual Arts  
R. Willmott . . . . . Manual Arts  
L. Patroni . . . . . Assistant Farm Supervisor  
P. Bass . . . . . Demonstrator  
J. Cochrane . . . . . Demonstrator  
C. Landwehr . . . . . Demonstrator  
M. Flaherty . . . . . Demonstrator  
D. Philipps . . . . . Relief Demonstrator  
D. Demao . . . . . Housemaster  
M. Richardson . . . . Housemaster  
B. Russell . . . . . Housemaster  
M. Strong . . . . . Housemaster  
L. Conti . . . . . Housemaster  
B. McCowan . . . . . Housemaster  
J. Puzey . . . . . Secretary

# AGRICULTURE

## THE PATHWAY TO EMPLOYMENT





**YEAR 11B**

Back Row: J. Beames, M. Knott, D. Hardey, C. Foster.  
 Centre Row: P. Robinson, R. Dall, M. Hoek.  
 Front Row: R. Mulchay, N. Hosey, M. Randall, M. Blechynden, D. Simpson, T. Ward.



**YEAR 12A**

Standing: Dale Hanks, Jason Spencer, Sean Lewer, Warren Marshall, Tom Newling.  
 Seated: Peter Frisina, Michael Houghton, Justin Rose, David Forrest, Stephen Spalding.



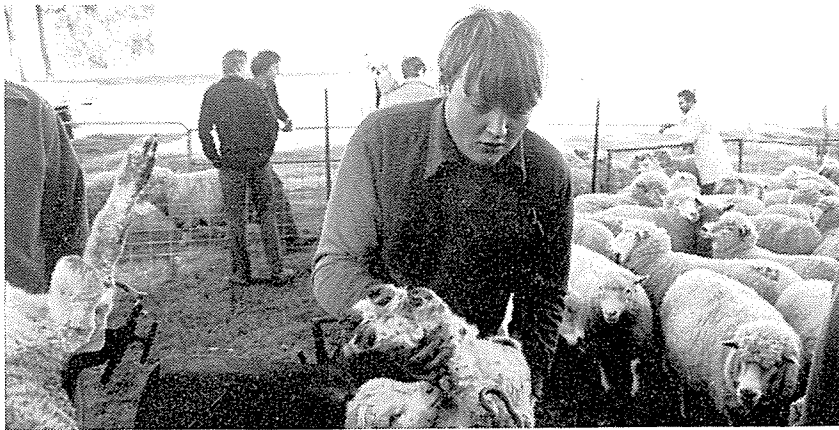
**YEAR 12B**

**Standing:** Todd Vaughn, Andrew Kau, Robert Morgan, Russell Ferguson,  
**Seated:** Paul Williams, Anthony Venn, Frank Longbottom, Greg Jones.



**YEAR 11A**

**Back Row:** C. Barton, J. Dilley, D. Bennett, D. Green,  
**Centre Row:** D. Jorgenson, M. Munday, R. Harding,  
**Front Row:** W. Bartlett-Torr, J. Lockwood, G. Wilson, R. Hill, A. Riccetti.



### **CROPPING**

A number of forage crops are grown for silage and hay. To boost production from our irrigation land an area is treated with Roundup herbicide at 1/2 litre/hectare to retard kikuyu growth. This land is then sown with oats or barley over Wimmera rye and sub-clover. The crop is used for winter grazing then cut for silage.

This year approximately 6 hectares of Benger Swamp will be sown to Sudax. This crop is to supplement the school's hay supply, and is ensiled at the home block.

### **POTATOES**

The students are growing almost the total school requirement. Different varieties being grown are Delaware and Kadema. The potatoes are planted in January, June/July and November at the Benger and home block properties.

## **RESIDENTIAL ORGANIZATION**

The school is a boarding institution with accommodation for 48 students and is also taking local students as day boys, beginning next year female Day students will attend the Agricultural Wing.

Housemasters supervise the students in the time outside school hours. All students are required to do a minimum of 1 1/2 hours of homework on weekday evenings.

Recreational time is spent in voluntary periods of sport every weekday afternoon. Students from the school play Football, Cricket and Hockey in the local competitions.

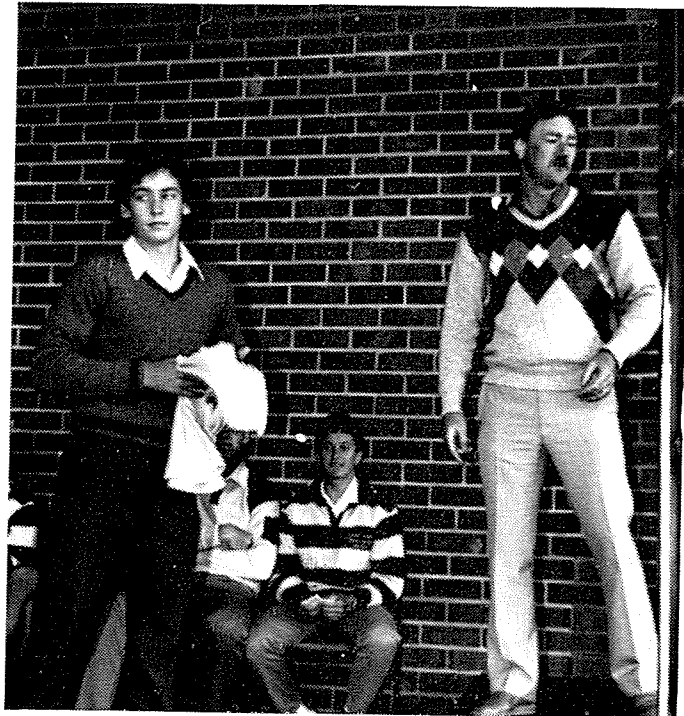
On weekends students are involved in many outdoor activities such as Survival camps, Camping Trips on the Bibbulmun Trail, Motor-cycle riding, Swimming, Surfing and other sporting activities. Leisure activities include shopping on Saturday mornings in Harvey or Bunbury, dances, barbecues, pool, tennis, trips to car and motorcycle racing, drag racing, excursions to shows, roller skating in Perth and Bunbury, etc.

Students are involved in normal upper school sports with Town Wing students each Wednesday afternoon and regular full school assemblies. The Agricultural Wing students also participate in house and inter school sporting competitions.

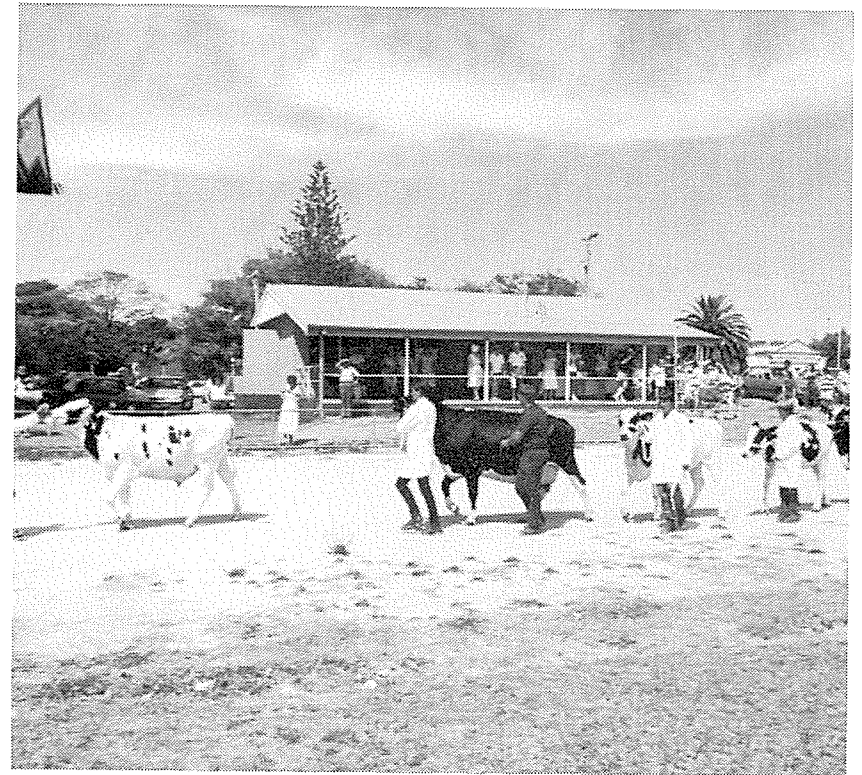




CRAIG FOSTER  
Footballer of the Year



TOM WARD  
Country Week West Coast Eagles  
Footballer of the Week.



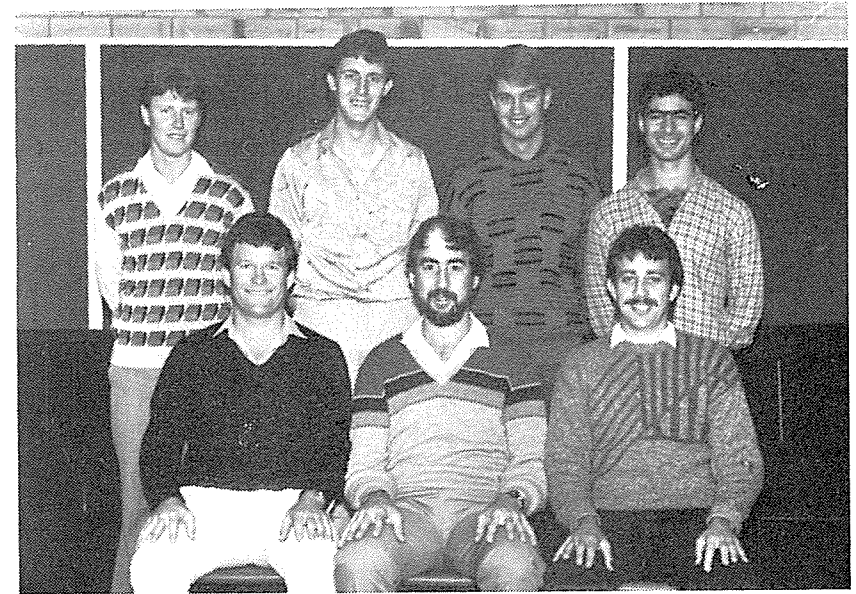
Harvey Dairy Festival.

### ORCHARD

Various citrus varieties are maintained under the sod culture principle. Students are involved with citrus budding for a take-home product. The school's policy on all aspects of Horticulture is currently under review, with a Flame, seedless table grape feasibility study commenced this year.

## SLAUGHTERHOUSE

Students are involved in the slaughter of pigs, sheep and cattle. The butcher shop is producing a variety of cuts of meat. Students also learn how to produce bacon, ham, sausages and corned meats.



### HOUSEMASTERS

Back: M. Strong, B. Russell, B. McCowan, L. Conti.  
Front: G. Hepworth, D. De Meo, M. Richardson.



Back: B. Flemming, P. Cusack, K. Jones, L. Micallef.  
Front: G. Whitwell, E. Winduss, C. Taylor.  
Absent: L. Bolton, T. Derrums.

## THE COURSE

The School offers courses in eight Certificate of Secondary Education subjects in Year 11 and seven in Year 12; all of which are school assessed subjects. 100% of the marks are accumulated throughout the year's course from assignments, spot tests, topic tests work sheets and practical work.



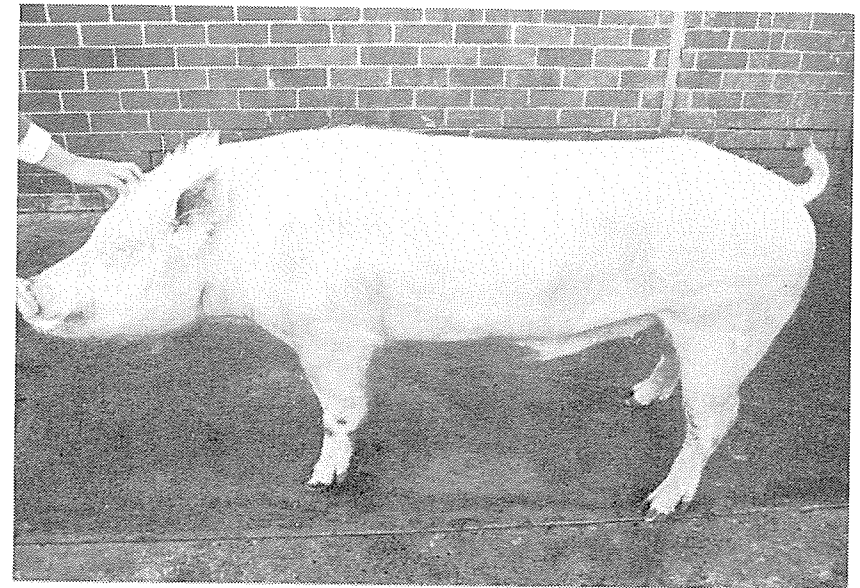
Back Row: A. Bolton, P. Allen, R. McManus.  
Front Row: L. McArthur, G. Hepworth, H. Jasper.  
Absent: R. Willmott, M. Charlesworth.

## BEEF HERD

The beef herd consists of 25 breeders. Hereford X Friesian cows are mated to a Murray Grey bull whilst heifers of similar breeding are inseminated with Murray Grey semen. Calves and dams are weighed monthly to allow breed comparisons to be made and to assist in culling. Some beasts are fattened in a lot feeder.

## PIGS

The breeding herd consists of 6 sows — Large White and Large White X Landrace mated to a Large White boar. Progeny for rations or sale are mostly carried through to baconer weight.



## POULTRY

The poultry unit contains 350 White Leghorn, Black Australorp and 100 New Hampshire X Black Australorp birds which are reared from day-old chicks. The birds are housed in cages or on deep litter and production from both types of housing is recorded.

A small batch of broilers are raised and dressed for use in the kitchen. Growth rates and food consumption are recorded to allow for an economical analysis.



### **SHEEP**

The school has flocks of Merino, Romney and Romney X Merino of approximately 850 in total. The ewes are mated to Merino, Poll Dorset, Romney and Suffolk rams. The various breeds are compared in wool and prime lamb production and also provide the students with shearing and wool classing experience.

---

## **CLASSROOM SUBJECTS**

**ANIMAL HUSBANDRY:** General principles of physiology and specific husbandry of sheep, cattle, pigs and poultry are covered in this subject. Feeding, breeding and animal health are treated in detail.

**CROPS AND PASTURES:** This subject deals generally with environmental factors of W.A. agriculture, such as soils and climate. Specific topics treated in detail include fertilizers, weeds, pests, crops and pasture management, soil and salt management.

**SENIOR ENGLISH:** The emphasis in this subject is on the improvement of student's skill in listening, oral fluency, reading ability, written communication and critical thinking. Particular attention is given to the interpretation and appreciation of the various forms of media. Student's can opt to take the T.E.E. English course instead of Senior English.

**COMPUTER AWARENESS:** With the purchase of 'Microbee' micro-computers, a computer awareness course has been initiated at the school for both Year 11 and 12 students. Students are given theoretic and practical experience in using software programmes applicable to agriculture, and use of the computer after hours is encouraged by a booking/licensing system. Results from this option are included in school assessment.

**HORTICULTURE:** One period per week has been allocated to the study of horticulture this year. The work has been aimed at vegetables, studying seasonal plantings, weed control, diseases and pests. Constant recording of harvest yields, fertilisers and their effects. Market prices for each group will be monitored throughout the year. We are currently writing a course for submission to the Secondary Education Authority in Horticulture for upper school.

**APPLYING MATHEMATICS:** Student's in Year Eleven are required to complete the Year Eleven course in this subject. It is designed to give students a greater understanding of mathematic's as applied to the Agricultural areas of work. More able students are given the opportunity to study Maths 1.

## MOTORS AND MACHINES

The emphasis in this subject is on the maintenance of vehicles and farm machinery. This aim is achieved by students servicing and maintaining all school vehicles and machinery. Some modification and construction of simple machines is also completed. The principles of operation and maintenance of engines and machines are also treated in theory sessions and run parallel with the practical activities where possible.



David Simpson at work restoring a "tired" Dihatsu.

## THE FARM

General farm policy is recommended by the Advisory Council and is implemented by the Farm Supervisor. The farm consists of approximately 200 hectares of which 12 are irrigated. Included in the 200 hectares is a temporary lease of 20 hectares on the old golf course. The school also has the use of a 4 hectare block at Cookernup.

An arrangement has been struck with the Department of Conservation and Land Management for the school to farm an area of Bengier Swamp and 22 ha of Reserve land west of Harvey.

### DAIRY HERD

The farm runs a herd of about 25 Holstein-Friesian milkers. Grade cows are being phased out in favour of registered females. Foundation stock for the herd were donated by members of the Friesian Cattle Club. Full production records are maintained. They are all artificially inseminated. A proportion of the herd (lower producers) to Poll Hereford semen to produce replacements for the beef herd.



## FARM PRACTICE

Students are rostered in rotation to each of the various farm sections where they perform the routine and seasonal operations under the supervision of farm demonstrators.

This practical work is supplemented by the comprehensive programme of demonstrations of farm operations. Marks in this subject are based on weekly assessments of performance and rostered tasks and on proficiency tests of specific selected skills such as shearing, tractor skill, gilt and heifer selection, fencing, etc.



**FARM STAFF**

Standing: Mr. L. Patroni (Asst. Farm Supervisor), Mr. J. Cochrane, Mr. D. Philipps.  
Seated: Mr. M. Flaherty, Mr. P. Bass, Mr. C. Landwehr, Mr. P. Egerton-Green (Farm Supervisor).

## FARM CONSTRUCTION

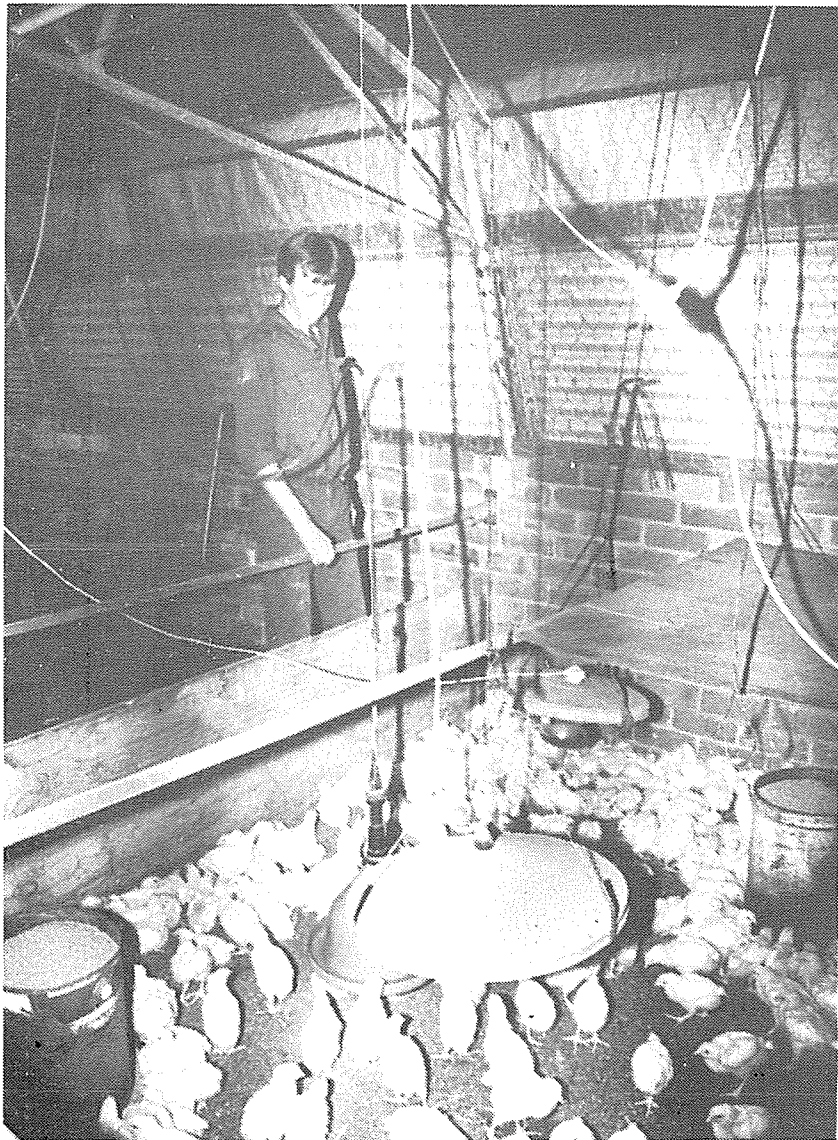
This course is concerned with the practical and the theoretical aspects of farm building construction. Students learn the basic skills of working with metals (such as welding), wood, concrete, etc., and apply them in the construction of student models and farm building.

Future development of farm buildings will include the new dairy which has the footings poured recently. Work this year has included upgrading the facilities in the chicken rearing shed for the student broiler project. One of the major maintenance jobs is the re-roofing of the battery layer shed.



Footings for the new dairy.

**STUDENT POULTRY ENTERPRISE:** This enterprise is run by the students and supervised by Mr. Hepworth. Over 500 broiler chickens are grown from one-day old chicks for 7 to 9 weeks in an intensive deep-litter shed, one shed full per term. Commercial crumbles and pellets are fed, and water is by an automatic gravity-fed system. The birds are slaughtered at about 2 kg in weight by the students, with the aid of a mechanised plucker and the facilities of the slaughter house.



PAGE 12

Students spend approximately half of their time in the classroom and in addition studies in these subjects are supplemented by practical activities on the School Farm. Excursions are made to local farms, associated industries and field days.

In addition, Year 12 students' experience is broadened by students staying on a local farm for one week gaining first hand experience on farm management on a commercial enterprise.

Lectures are presented by visiting guest speakers from the Agricultural Department on topics such as animal health, Declared Pests, weed control, soil conservation, soil sampling, plant sampling, etc. Officers of the Bush Fires Board lecture and demonstrate techniques for the prevention and control of bush fires.

All students receive the Department of Agriculture's 'Farm Notes' to keep them abreast of the latest developments in agriculture.

Students are encouraged to use the Agdex file, journals and reference collection in the school's library in the compilation of regular written assignments.



PAGE 13