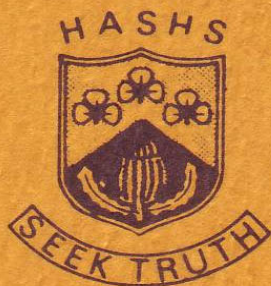


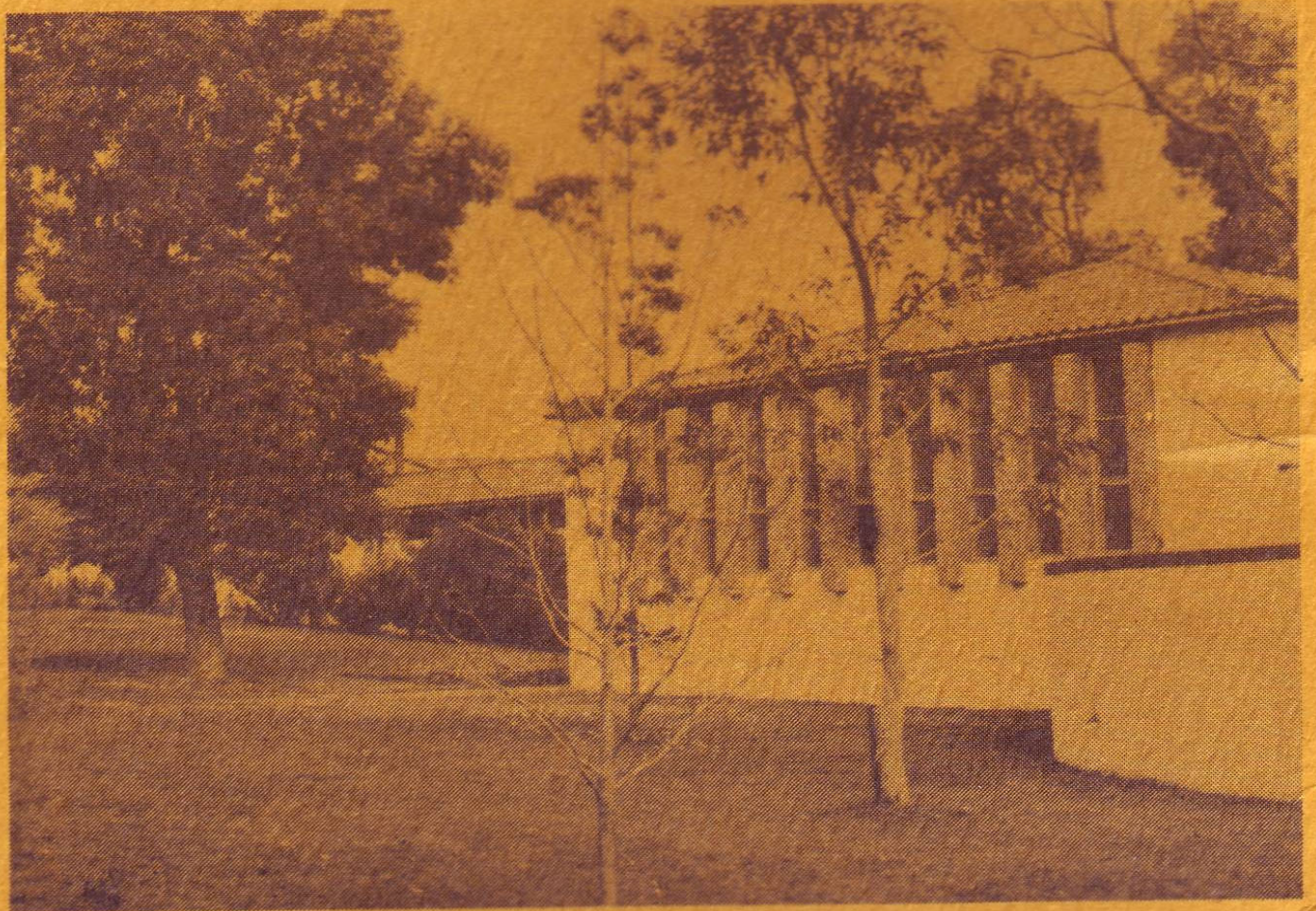
**HARVEY AGRICULTURAL  
SENIOR HIGH SCHOOL**



**FIELD  
DAY**



**THURSDAY  
OCTOBER 4th, 1979**



# HARVEY AGRICULTURAL SENIOR HIGH SCHOOL

Welcome to the Agricultural Wing of Harvey Agricultural Senior High School. The school offers a course of two years duration and its main aim is to provide a sound education in modern agricultural theory and practice for students who return to their parent's properties or who seek a future in rural activities. The courses are moderated by the Board of Secondary Education and lead to a Certificate of Secondary Education.

The school, once an Internment Camp, an Army Camp a Commonwealth Rural Training Establishment, has developed since it began in 1953 into a fine, well-equipped, diversified educational institution. It is situated in picturesque surroundings on the river banks and surrounded by some of the most productive farmlands in the state.

The school is proud of the part it plays in Agricultural Education and each year sends forth young men who will contribute to their respective communities and who will take their place among the leading citizens of the future.



## PROGRAMME

10.30 a.m.	Manual Arts and Classroom
11.30 a.m.	Official opening
12 noon	Lunch
1.00 p.m.	Farm activities
2.45 p.m.	Afternoon Tea

# HARVEY AGRICULTURAL SENIOR HIGH SCHOOL AGRICULTURAL WING

## ADVISORY COUNCIL

J. Blackburn  
L.G. Knight  
J.M. Lowe

I.W. Manning  
D.W. Partridge

J. Giumelli  
D.E. Vass

## STAFF

F. Quinlivan	— Principal
D. Adams	— Senior Master
A. Baronie	— English
P. Blacklock	— Housemaster
L. Craigie	— Demonstrator
G. Dadson	— Housemaster
P. Egerton-Green	— Asst. Farm Supervisor
D. Gilpin	— Demonstrator
J. Godfrey	— Farm Supervisor
J. Krieg	— Manual Arts
R. Lamb	— Agriculture
J. Luca	— Housemaster
P. Mitcham	— Housemaster
C. Murray	— Demonstrator
L. Patroni	— Demonstrator
P. Smith	— Physical Education
G. Stewart	— English/Housemaster
R. Willmott	— Manual Arts
G. Weaver	— Housemaster
J. Puzey	— Secretary



### STAFF

**BACK ROW:** L. Patroni, R. Willott, G. Stewart, J. Krieg, P. Smith, G. Dadson, L. Craigie.  
**FRONT ROW:** C. Murray, D. Gilpin, J. Puzey, F. Quinlivan, D. Adams, A. Baronie, P. Egerton-Green.



### PREFECTS

**BACK ROW:** S. Hartnett, B. Yull, A. Weightman, R. Glover.  
**FRONT ROW:** R. Leggerini(Vice Captain), D. Fry Captain), G. Connell.

## RESIDENTIAL ORGANISATION

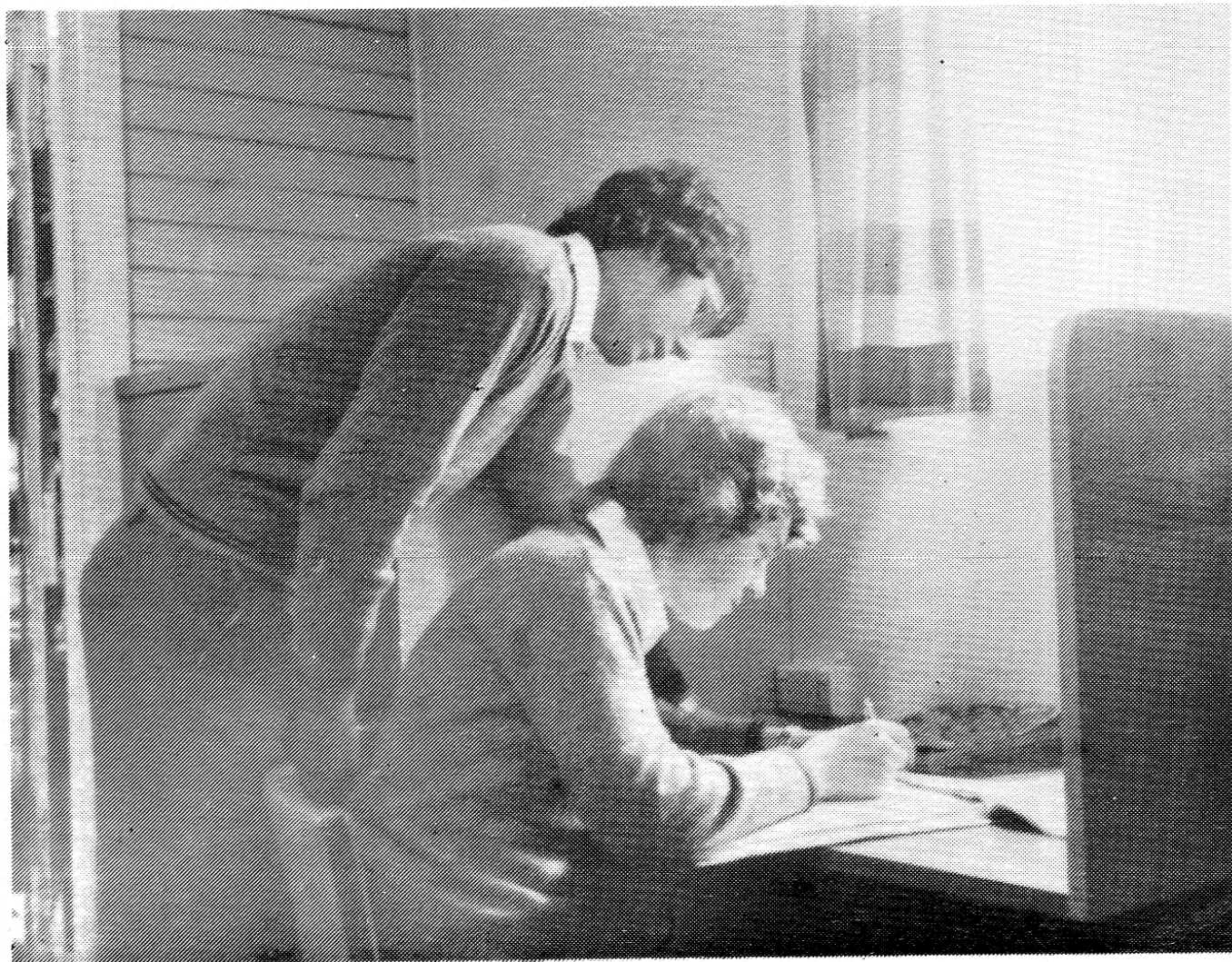
The School is a boarding institution with accommodation for 48 students.

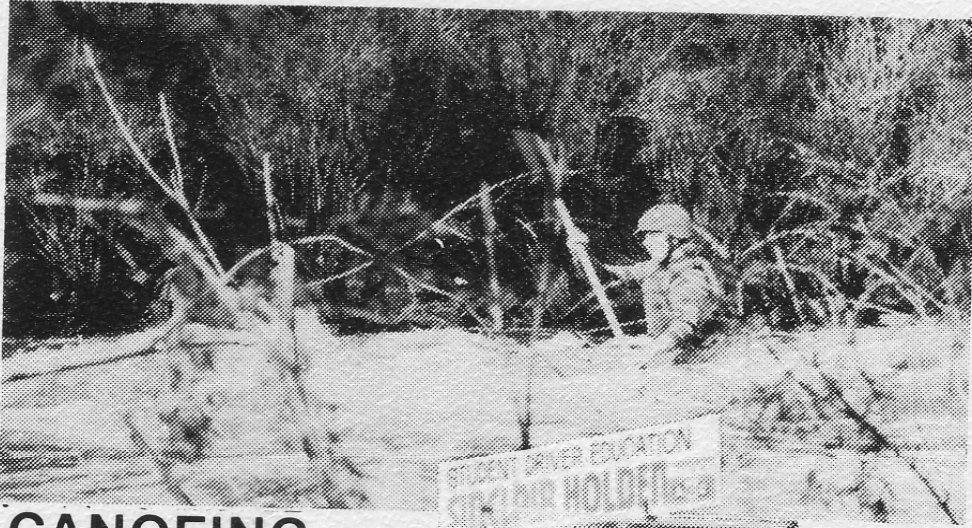
Housemasters supervise the boys in the time outside of School hours. All students are required to do 1½ hours of homework on the weekday evenings.

Recreational activities are largely based on sport with organised periods on most afternoons. School teams participate in district competitions in Basketball, Football and Hockey. Other physical activities which students **may pursue** are Motor-bike riding, Canoeing, Hiking, Horse riding, **Rifle shooting** and the Duke of Edinburgh Award Scheme.

The Student Driving Scheme is conducted after school for Year 12 students. Sinclair Holden are to be thanked for providing the car for this purpose, and Mr. J. Morley for his time given as instructor for the Scheme.

Leisure activities include shopping on Saturday morning, Drive-In pictures on Saturday night, dances, barbecues, pool, tennis, T.V. viewing, etc.





**CANOEING**



**DRIVER TRAINING**

**RIFLE SHOOTING**



## THE COURSE

The School offers courses in seven Certificate of Secondary Education subjects all of which are school assessed subjects. In each subject, 50% of the marks are accumulated throughout the two year course from assignments, practical work and topic tests. The other 50% in each subject is externally assessed by examinations or tests common to all Agricultural Schools.

### CLASSROOM SUBJECTS

**ANIMAL HUSBANDRY:** General principles of physiology and specific husbandry of sheep, cattle, pigs and poultry are covered in this subject. Feeding, breeding and animal health are treated in detail.

**CROPS AND PASTURES:** This subject deals generally with environmental factors of W.A. Agriculture such as soils and climate. Specific topics treated in detail include fertilizers, weeds, pests, crop and pasture management, soil and salt management.

**FARM ECONOMICS AND MANAGEMENT:** The financial management of the farm is studied from a commercial and economic aspect. Specific topics include banking systems, borrowing and investing, taxation, budgetting, insurance marketing, work study, etc.

**GENERAL ENGLISH:** The emphasis in this subject is on the improvement of student's skill in listening, oral fluency, reading ability, written communication and critical thinking. Particular attention is given to the interpretation and appreciation of the various forms of media.

Students spend approximately half of their time in the classroom and in addition studies in these subjects are supplemented by practical activities on the School Farm. Excursions are made to local farms, associated industries and to field days. During Second Term, Year: 12 Students make a four day tour of the metropolitan area to view activities such as wool processing, the pig research station, testing and tractor manufacturing. A three day trip was made to Cunderdin to view wheatbelt farming practices. In addition, Year: 12 students' experience is broadened by the farm week scheme whereby students stay on a local farm and gain first hand experience of farm management on a commercial unit.

Lectures are presented by visiting guest speakers from the Agricultural Department on topics such as animal health, vermin and weed control, soil conservation, etc. Representatives from industry have spoken on such topics as concrete usage and tractor maintenance. Officers of the Bush Fires Board lectured and demonstrated techniques for the prevention and control of bush fires.

Students are encouraged to use the Agdex file, journals and reference collection in the School's library by the requirement of completion of regular written assignments.





**BACK ROW:** D. Martin, R. Glover, B. McLean, D. Fry, R. Leggerini, S. H.  
**STANDING:** B. Gillespie, P. Sowry, A. Weightman, W. Bond, M. R.  
N. Lee, B. Curtis, T. Roberts, J. Thystrup, G. Bell, R. Wright  
**SITTING:** R. Evans, A. Feutrill, G. Peacock, I. Potter, S. Wood, N. M.  
**KNEELING:** J. Castle, G. Collett, W. Ricetti, R. Day, R. Reeve, R. Egert



Hartnett, L. Morton, R. Kennedy, G. Parnell  
Cocca, C. Box, C. Keall, G. Connell, B. Yull, B. Edwards, G. Davis,  
St. N. Anderson.  
Hillard, B. Puttick, G. Brown, B. Powell.  
Don-Warburton, N. Lee, B. Kirkpatrick.

## **MOTORS AND MACHINES**

The emphasis in this subject is on the maintenance of vehicles and farm machinery. This aim is achieved by students servicing and maintaining all school vehicles and machinery. Some modification and construction of simple machines is also completed. The principles of operation and maintenance of engines and machines are also treated in theory sessions.

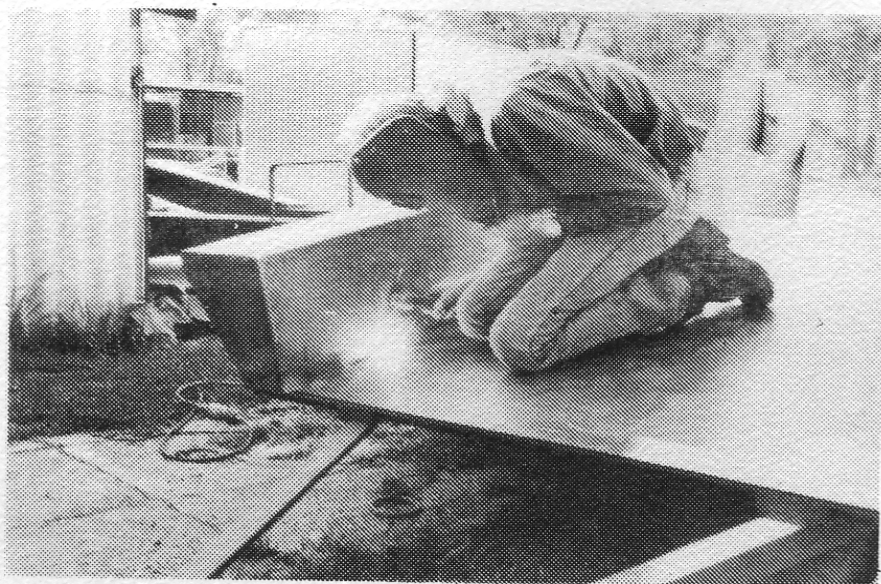
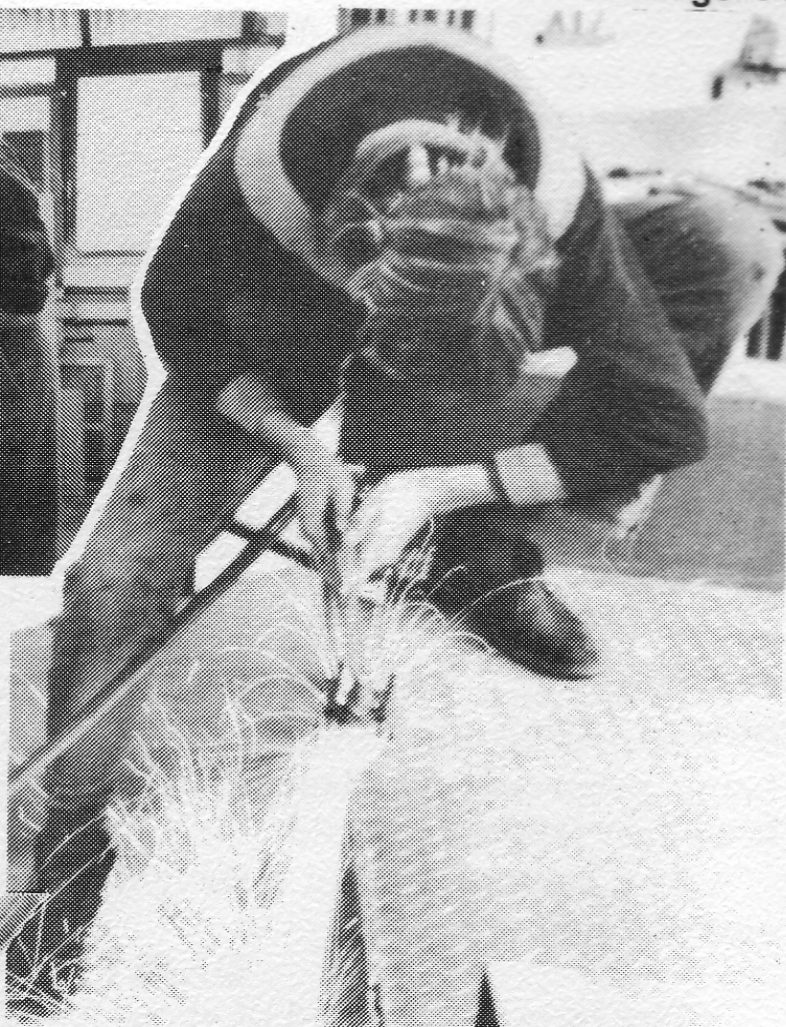
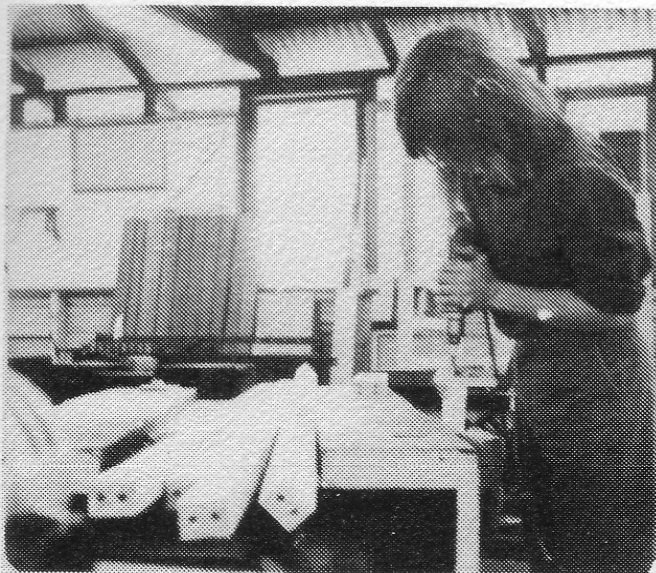
## **FARM CONSTRUCTION**

This course is concerned with the practical and theoretical aspects of farm building construction. Students learn the basic skills of working with metals (such as welding), wood, concrete, etc., and apply them in the construction of student models and school farm buildings.

Students have participated this year in the construction of the piggery, internal fixtures in manual arts centre, etc.

Time is spent out of hours to maintain woodwork as an option within this subject area.





# FARM PRACTICE

Students are rostered in rotation to each of the various farm sections where they perform the routine and seasonal operations under the supervision of farm demonstrators. This practical work is supplemented by the comprehensive programme of demonstrations of farm operations. Marks in this subject are based on weekly assessments of performance and rostered tasks and on proficiency tests of specific selected skills such as shearing.

## THE FARM

General farm policy as recommended by the Principal and Advisory Council is implemented by the Farm Supervisor. The farm consists of approximately 185 hectares of which 12 are irrigated. In addition the farm has a temporary lease of the old golf course.

### PLANNED DEVELOPMENT:

In January 1978, the Education Department purchased an extra 65 hectares of hill country for the farm (Byrd's block). This area is being progressively cleaned up for hay cutting, subdivided and the boundary fences replaced.

The construction of a slaughter house is to be commenced to the east of the new piggery.

### DAIRY HERD:

The farm runs a herd of about 25 Friesian milkers. Grade cows are being phased out in favour of registered females. Foundation stock for the herd were donated by members of the Friesian Cattle Club. Full production records are maintained.

### BEEF HERD:

The beef herd consists of 30 breeders. Friesian and Friesian X Charolais dams are mated to a poll Hereford bull and Simmental semen is used to inseminate the Friesian X Hereford breeders. Calves and dams are weighed monthly to allow breed comparisons to be made and to assist in culling. Some beasts are fattened in a lot feeder.

### SHEEP:

The school has flocks of Merino, Romney, Romney X Merino and Border Leicester X Merino ewes of 300 in total. The ewes are mated to Poll Dorset, Southdown, Romney and Suffolk rams. The various breeds are compared in wool and fat lamb production and also provide the students with shearing and wool classing experience.

A small flock of carpet wool sheep is to be bred from selected Romney ewes and a Drydale ram.

### POULTRY:

The poultry unit contains 400 Australorp-White Leghorn cross birds which are reared from day-old chicks. The birds are housed in cages or on deep litter and production from both types of housing is recorded.

A small batch of broilers are raised and dressed for use in the kitchen. Growth rates and food consumption are recorded to allow for an economic analysis.

#### **ORCHARD:**

Citrus, stone and pome fruits are maintained under the sod culture principle. The drag-hose system of irrigation is being replaced by trickle irrigation.

#### **CROPPING:**

A number of forage crops are grown for silage and hay. Extra crops have been grown recently because of the shortage of irrigation water and in conjunction with the farm's dock eradication programme. In this programme infested paddocks are repeatedly cropped with oats and sprayed with selective herbicide.

#### **FARM WORKSHOP:**

Machinery installed has enabled the farm section to maintain farm machinery, construct gates, hay feeders, trusses, etc., and to modify equipment.

