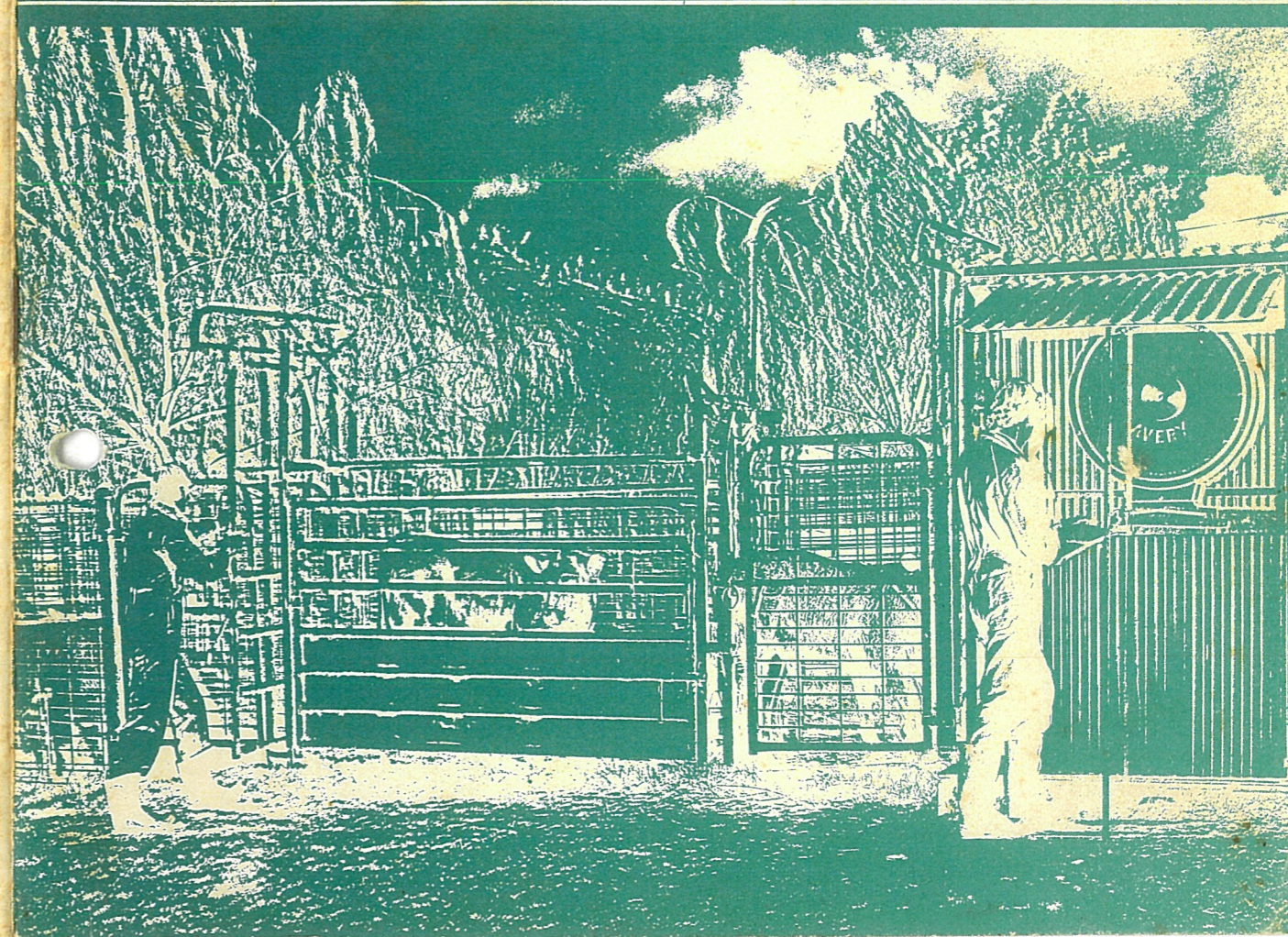
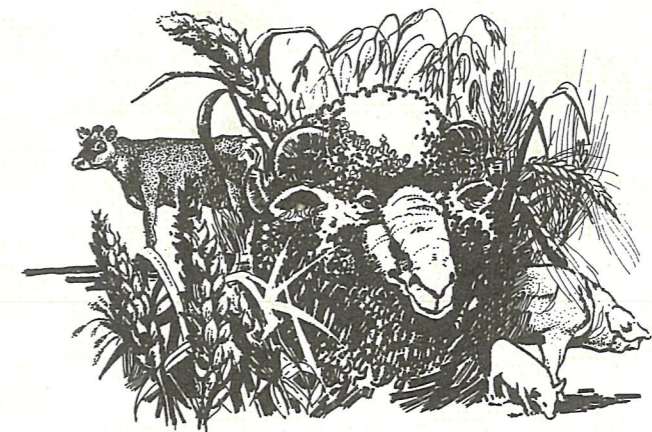


AGRICULTURAL HIGH SCHOOLS
Prospectus
RESIDENTIAL AGRICULTURAL
WINGS



RESIDENTIAL AGRICULTURAL WINGS of the AGRICULTURAL HIGH SCHOOLS



EDUCATION DEPARTMENT OF WESTERN AUSTRALIA

THE RESIDENTIAL AGRICULTURAL WINGS

There are four residential agricultural high schools. They are Narrogin Agricultural Senior High School, Harvey Agricultural High School, Cunderdin Agricultural District High School and Denmark Agricultural District High School. While part of the High School, each Agricultural Wing is located some distance from the respective towns.

Courses offered are suited to boys intending to return to their home farms to become farmers. Some students may find careers in industries associated with agriculture.

THE COURSE

Agricultural Wings offer courses in seven Certificate of Secondary Education subjects. Students are therefore eligible for receipt of the Certificate after completion of the two-year course.

Courses cover the principles of agricultural science associated with practical farming activities and associated modern trade practice.

None of the subjects is intended to qualify students for entry into tertiary institutions, but this progression is possible for individual cases—particularly for entry into the Western Australian Institute of Technology.

General English

Development of skills of communication and of the student's awareness of himself and the world in which he lives are the course aims.

This is achieved by improvement of skills of observation, listening, oral fluency, reading ability, written communication and critical thinking.

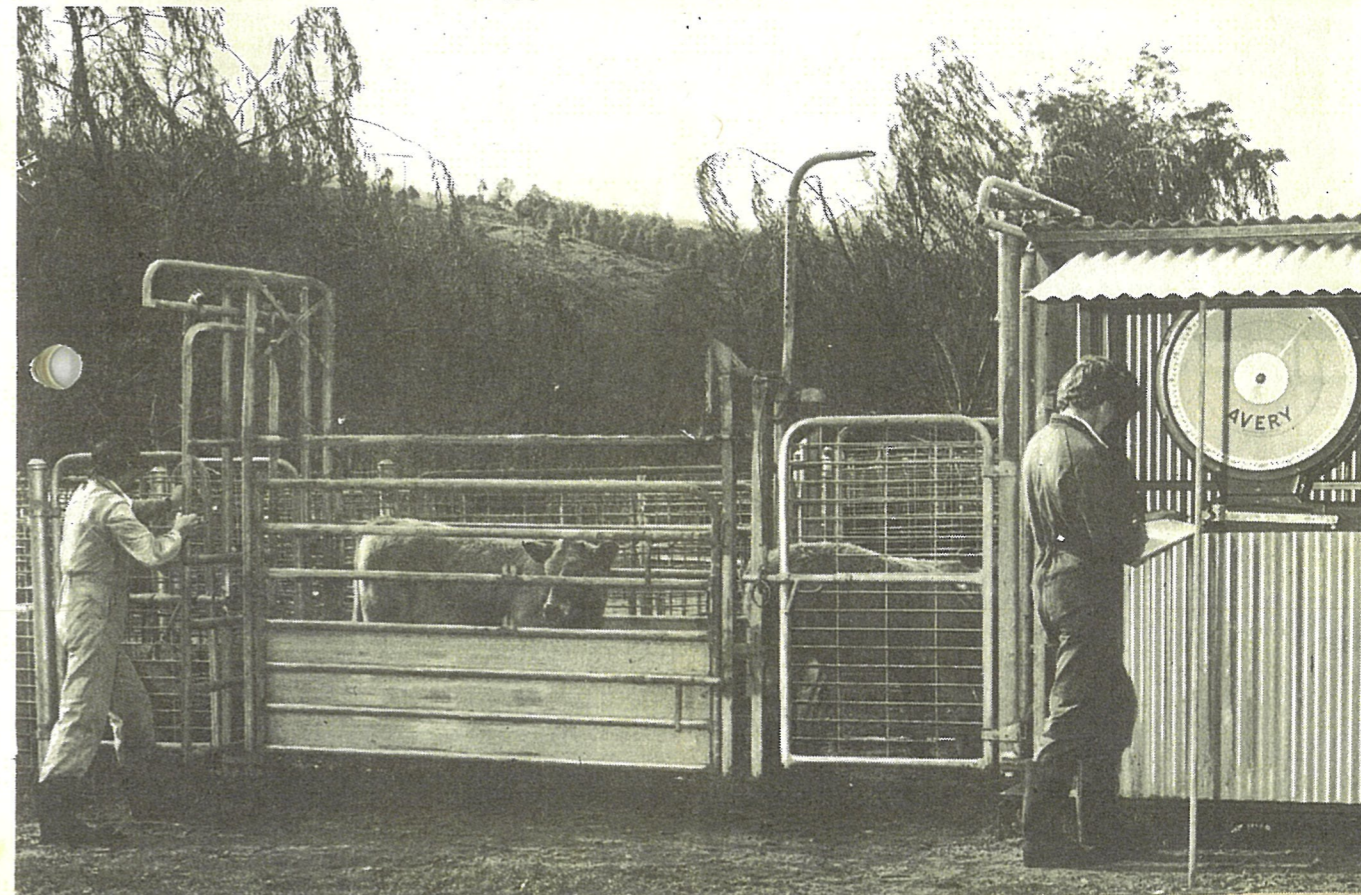
Active student participation and involvement in the course contributes to its usefulness.

Animal Husbandry

Principles of physiology, nutrition and breeding are treated comprehensively before the more specific husbandry practices for sheep, cattle, pigs and poultry. Various aspects of animal health complete the course.

Sheep work includes "clip preparation" and offers students the opportunity to gain the Australian Wool Corporation's Owner-Classifier Certificate.

Performance recording is part of the beef programme at each school.



Crops and Pastures

Development of cultivated plants, their processes and nutritional requirements are related to the agricultural environment of Western Australia's agricultural areas and the conditions for crop growth. Crop and pasture management, including soil conservation, are covered in detail.

Farm Economics and Management

The farm business and techniques of planning, budgeting, controlling, recording and obtaining finance and information comprise the first year of the course.

The second year's work comprises forms of business and personal financial protection, taxation, marketing and various social aspects of farming.

Animal Husbandry, Crops and Pastures, and Farm Economics and Management all include extensive demonstration programmes and study groups, which are run jointly by teaching and farm staffs. Every opportunity is taken to utilize the expertise of persons from the farming community, particularly the Department of Agriculture. Several visits to farms and farming organizations are arranged for student groups.

Farm Practice

Students are allocated in rotation to each of the various six or seven farm sections, where they participate in routine and seasonal operations. This practical work is supplemented by the comprehensive programme of demonstrations of farm operations.

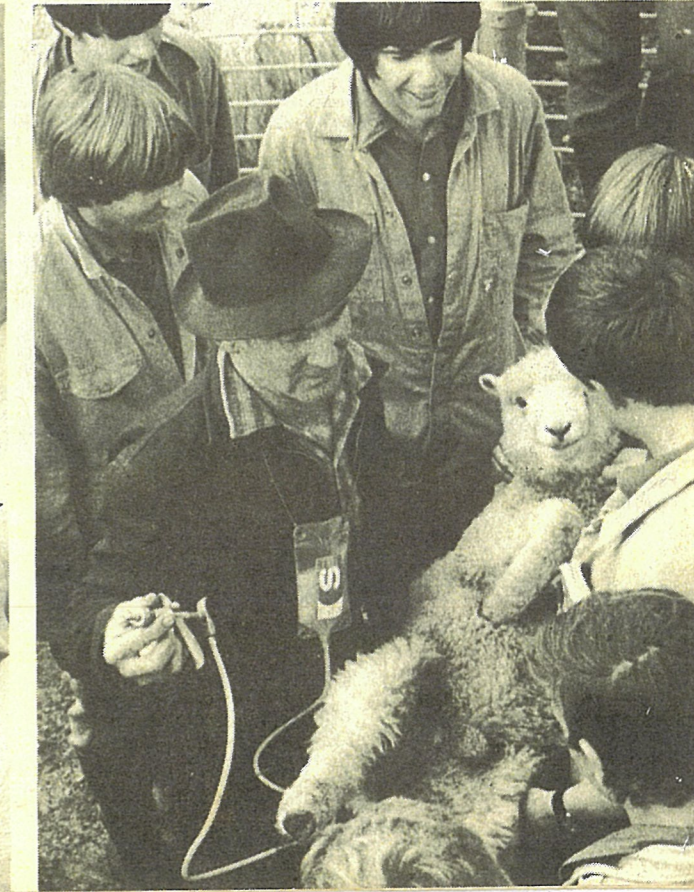
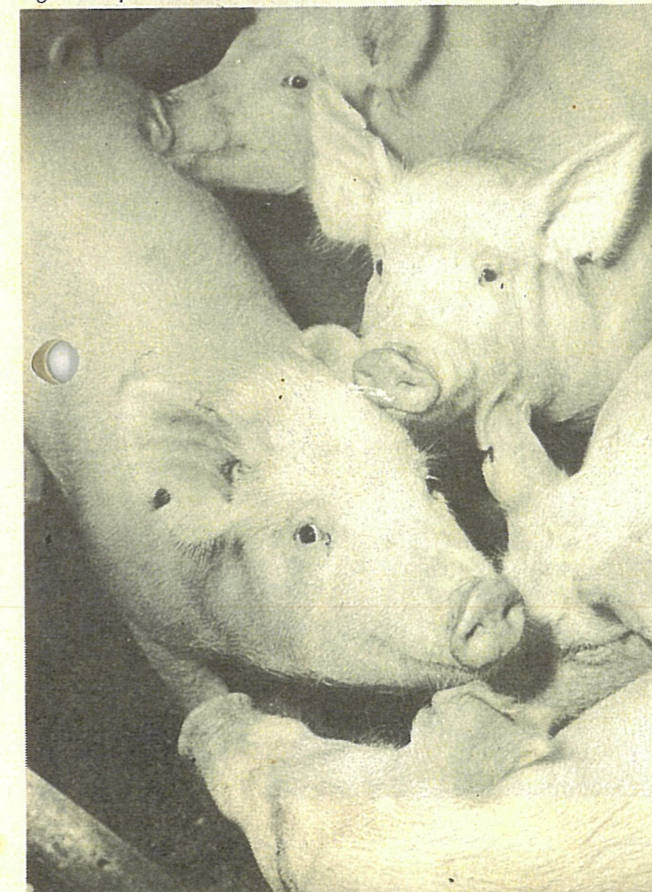
Proficiency tests are conducted for specific selected skills with the emphasis on correct procedure and understanding rather than speed.



Each school farm has modern shearing facilities.

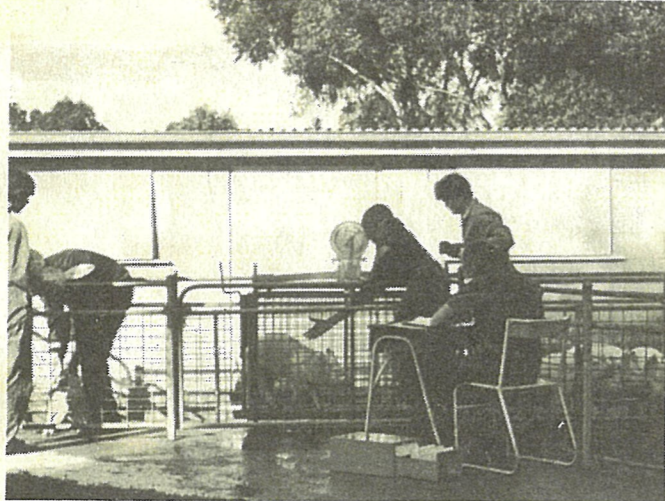
Pigs form part of each school's farm programme.

Demonstrations on all aspects of stock husbandry are conducted for groups of students.

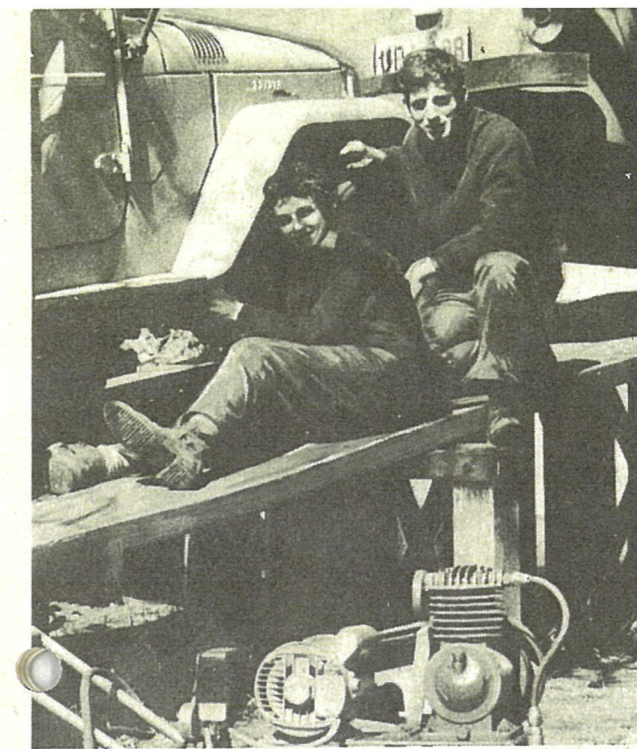
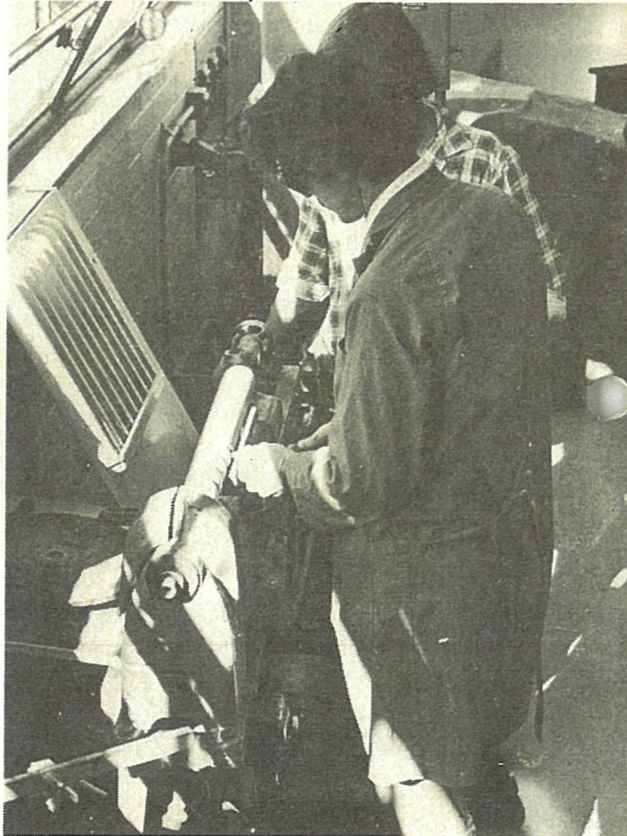
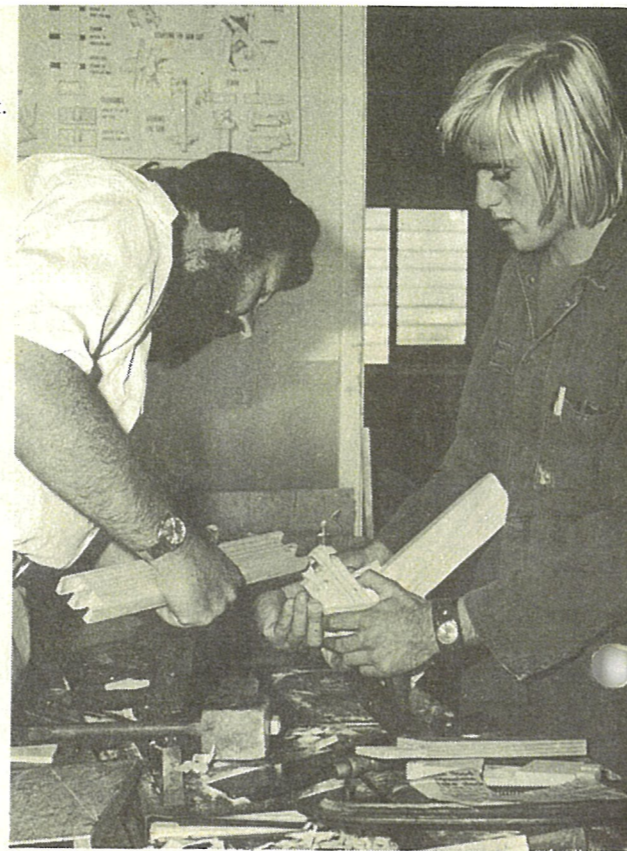


Woodwork is offered as an optional subject.

All schools maintain cropping programmes.



Performance evaluation is a part of routine pig husbandry.



Instruction in motor vehicle maintenance is provided.



Farm Constructions and Motors and Machines involve practical workshop activity and related theory work. Arrangements are made for experts in their fields to visit the schools and for students to visit relevant organizations.

Farm Constructions

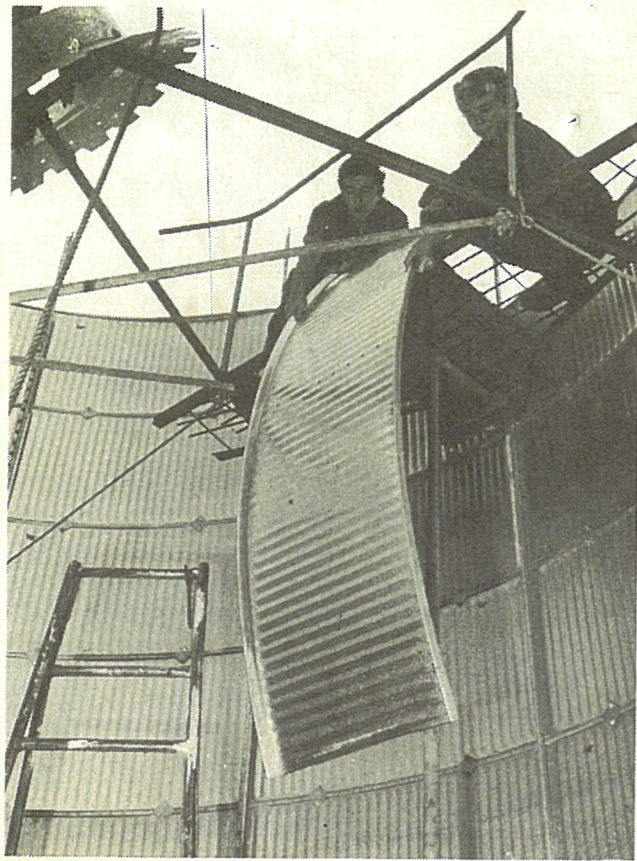
The workshop operations necessary for bench, sheet metal, lathe and forge work, and particularly oxy-acetylene and electric welding, are taught as the necessary basic skills for building. This work is covered in conjunction with the various planning procedures, site preparation, construction and maintenance of farm buildings.

Each Wing conducts a continuing programme of farm building construction in which each student may participate.

Motors and Machines

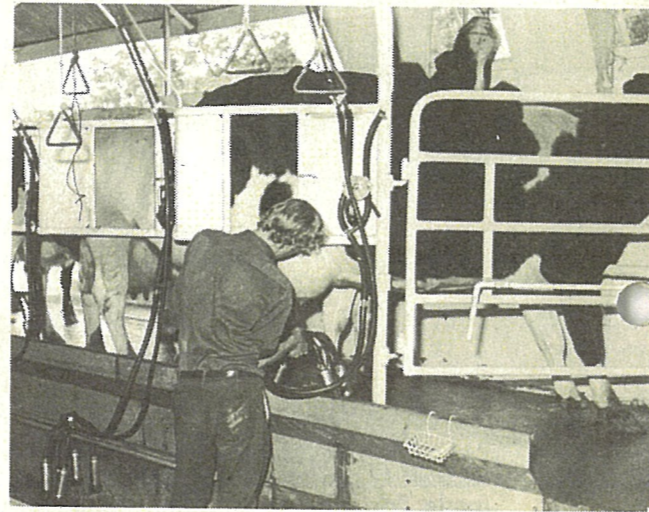
Principles of operation and maintenance of the piston-type internal combustion engine, and of a motor vehicle's systems, form the basis of the "motors" part of the course. Other engines are also dealt with.

The "machines" segment covers the agricultural tractor and machinery used for cultivation, sowing, harvesting, earth moving and specific purposes like shearing, pumping and milking. Principles of operation, routine care, maintenance, adjustment and simple repairs are covered for each.



Building construction is an important part of the course.

Milk for domestic supplies is produced where possible.



Slaughtering is offered or planned at each school.

Oxy- and arc-welding is taught to all students.

GENERAL INFORMATION

Residential facilities

Each Agricultural Wing offers exceptionally high quality student accommodation. Dormitories and dining-rooms are modern and well appointed. All schools provide a wide range of sporting facilities for student use under the guidance of full-time sportsmasters.

Facilities for students include recreation rooms and canteens, and visits to local shops are arranged as required. Social events are conducted from time to time.

Facilities are available for students to carry out occasional laundering. Regular laundering is contracted locally by the school, and the accounts are forwarded to the parents or guardians at intervals.



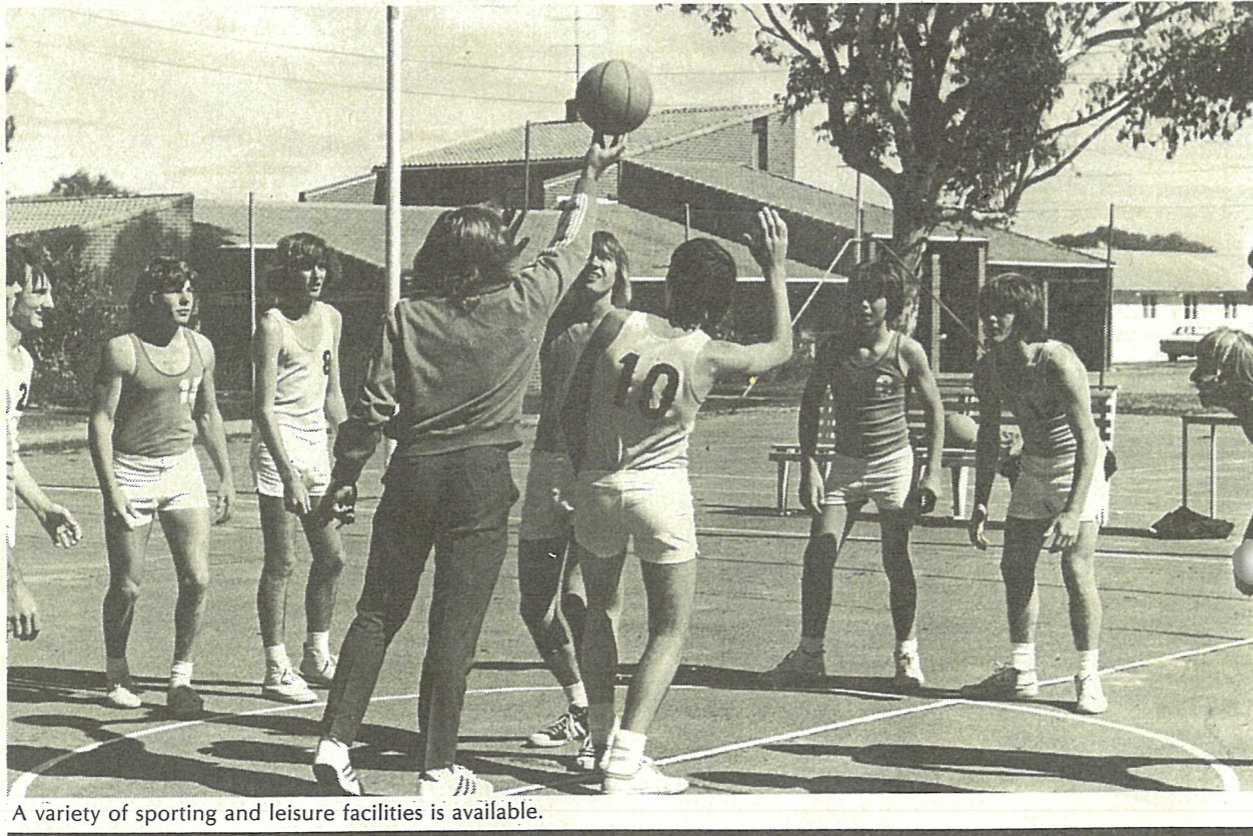
First class meals are a feature of the Agricultural Wings.



Personal quarters for students are of a high standard.,



Dining accommodation is spacious and modern.



A variety of sporting and leisure facilities is available.

Admission

Admission to agricultural wings is by selection. Application for selection should be made on forms available from Government secondary schools, or from the Education Department, West Perth. Applications close on 31 October each year.

Each applicant must have completed three years of secondary education. Proof of medical and dental fitness must be provided on prescribed forms, and applicants must have been immunized against tetanus in the preceding five years.

An undertaking that students will conform to the school's rules and regulations is required on the application form. These apply to conduct, attendance and appearance.

Parents interested in enrolling sons are invited to visit the agricultural wings, where they will be made most welcome.

Fees

A school fee is payable to the Education Department early each term after receipt of an invoice. In addition, individual schools levy a fee to cover amenities and various deposits. This fee is payable at the school on the opening day. Details of current amounts for all fees may be obtained from individual schools.

Agricultural Wing Students are eligible to claim for the Commonwealth Government's Scheme for Isolated Children. The Scheme embraces students living at residential schools and comprises the Basic Annual Grant; the Additional Allowance which is payable according to the outcome of a means test; and for cases eligible for the maximum Additional Allowance, the Supplementary Allowance, payable after a second, more rigid means test.

Illness

Students who become ill will be taken to the local doctor and, if necessary, admitted to hospital. The Education Department recommends membership of a recognized hospital benefit fund, and the additional protection of the School Insurance Scheme of the State Government Insurance Office, in case of accident.

Leave of absence

Leave of absence can only be granted by the principal. Students leaving without permission may forfeit the right to return. Permission will not be granted for students to return to home farms for seasonal duties.

School dress

Each school has its own uniform which is worn by all students, and approved work clothing is worn for farm tasks. The full clothing list is supplied by the schools to successful applicants, with information as to where special items such as blazers may be purchased.

Textbooks

Several textbooks are required. These are expensive, but are selected in order that they may be used as reference books when the student returns to the farm. The books are procurable at the school when the course begins.

Religious observance

Arrangements are made for students who wish to do so to attend church services on Sundays.

Pocket money

Pocket money is regulated and handled by various systems within the schools. Generally, this consists of an allowance at a regular period; but, in the event of an emergency, money can be made available. Parents are requested to remit money direct to the principal.

Field and visitors' day

The annual field and visitors' days held at each school offer excellent opportunities to see the schools functioning. They are usually held towards the end of the year.

Driver education

Each school has a local scheme for training students in tractor driving and use of farm vehicles. In addition, students have access to the National Safety Council's Driver Training Scheme, which prepares candidates for gaining their Motor Driver's Licence at the legal age.

The Driver Education scheme operates at all Agricultural Wings.



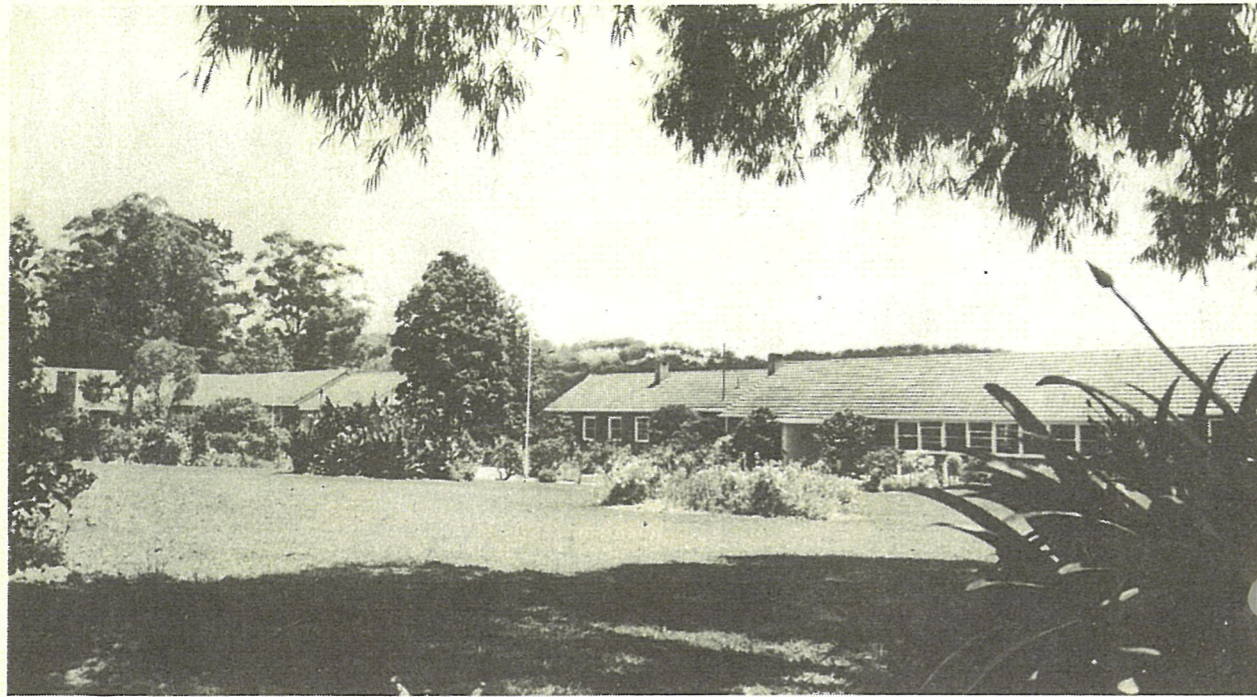
CUNDERDIN AGRICULTURAL DISTRICT HIGH SCHOOL

Cunderdin is 160 kilometres east of Perth on the Great Eastern Highway. Located in the 350 mm rainfall belt, it is the centre of a rich and progressive wheat-growing and sheep-raising district.

The school is 3 kilometres north of the town. Accommodation is in double-unit rooms for 64 students. Dormitories are named after two dedicated staff members and overlook a large central garden.

750 hectares of sandy tamar and red gimlet country comprise the farm. As well as wheat and barley, lupins and oats are grown and sub-clover has been established. Merinos form the majority of the sheep flock and fat lambs are raised. A herd of 25 Hereford-Australian Illawarra Shorthorn dams are used for mating to a different breed of bull each year in the beef programme. A 20-sow piggery, a small poultry unit and an Angora goat herd complete the farm teaching units.

Students may participate in horse-riding, go-karts and trail bikes as well as the more usual leisure activities. School teams compete in district association competitions in basketball, cricket, hockey and football.



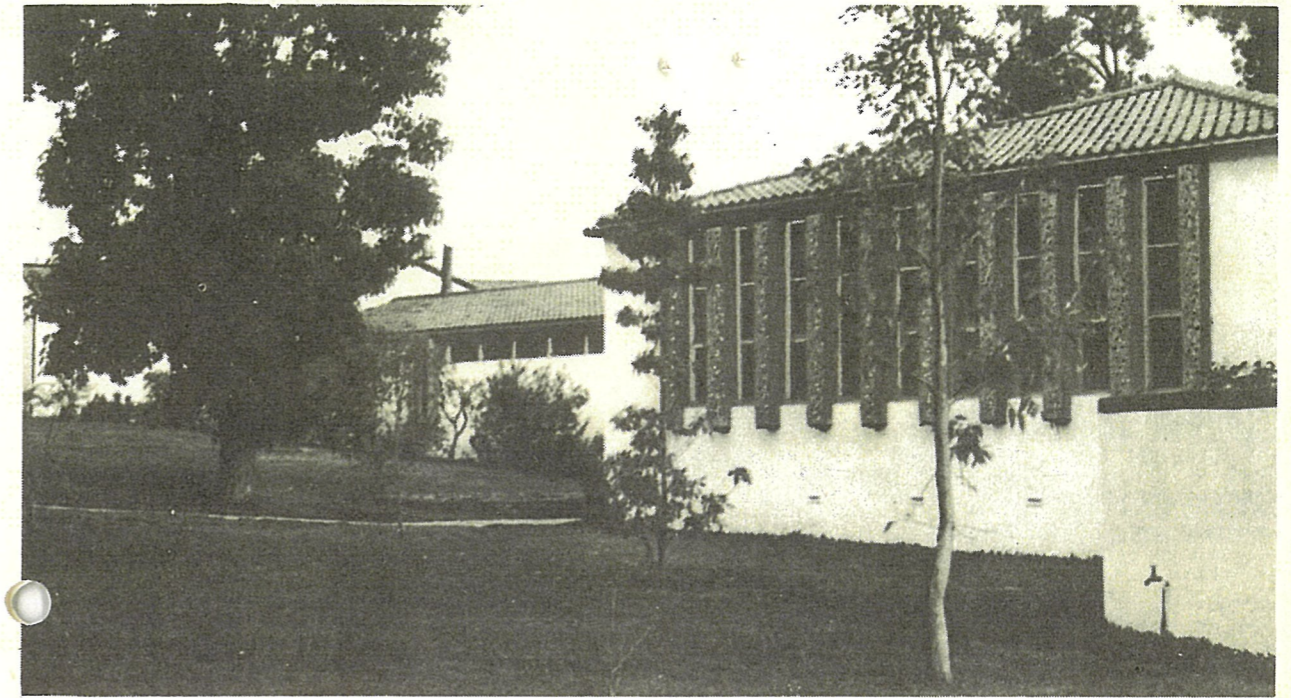
DENMARK AGRICULTURAL DISTRICT HIGH SCHOOL

Denmark is 400 kilometres south of Perth on the southern coast. The climate is mild, with a rainfall of 1100 mm per annum. Pasture growth is almost continuous and grazing of beef and dairy cattle forms the nucleus of the district farming activities.

The school is 2 kilometres from the town and caters for 40 boys. Dormitories comprise individual cubicles located in a pleasant garden setting.

Beef cattle comprise the major activity on the 202-hectare farm. Santa Gertrudis cross dams are bred and used with Devon to produce commercial-type beef. An Angus herd is run with a Friesian herd for the dairy. Artificial breeding techniques are employed as part of the breeding programme. Pasture and fodder necessary for the cattle have silage production as the focal point. 15 large white sows form the basis for the piggery and a crossbred flock of sheep is used for the fat lamb programme. A poultry unit is also operated.

Surfing and canoeing equipment is available at the school, which, with horse-riding and trail bikes, provide popular supplements to the more sedate leisure activities. Teams are fielded in district associations for basketball and hockey and students may play association football.



HARVEY AGRICULTURAL SENIOR HIGH SCHOOL

Harvey lies 140 kilometres due south of Perth, on the main road and rail route to Bunbury. The area is the heart of a prosperous dairying and beef-raising district, which makes intensive use of irrigated pasture.

The school is situated on the banks of the Harvey River, about 3 kilometres from the town. The dormitories overlook the river and accommodate 48 students in individual cubicles.

Irrigated flats and hill-side country combine to form the 120 hectares of the farm. Cattle raising is the major activity and extensive use is made of artificial breeding. Friesians are milked in a herringbone dairy and surplus dairy cows are used to produce Charolais cross beef. Fat lambs are produced, a small flock of merinos is run, and wool-classing and shearing are conducted in a new shearing-shed. Pig and poultry programmes are maintained, and a variety of fruit is grown in an orchard.

In addition to the more usual leisure facilities, students may participate in beach fishing, canoeing and horse-riding. The Duke of Edinburgh Award Scheme is operative, and sporting teams compete in the district associations for basketball, football, hockey and cricket.



NARROGIN AGRICULTURAL SENIOR HIGH SCHOOL

Narrogin is 190 kilometres from Perth in the Central Great Southern. The district is in the 500 mm rainfall belt and supports vigorous mixed farming enterprises.

The school is 9 kilometres from the town and provides accommodation for 108 students in individual cubicles. Residential and administrative buildings are constructed around a large central garden area.

The school farm comprises 1090 hectares of undulating country. Wheat, barley, oats and lupins are cropped and Merino, Corriedale and fat lamb sheep flocks managed. Angus, dairy cross and Limousin beef herds are run, as well as a dairy herd of Friesian and Australian Illawarra Shorthorns. Artificial breeding techniques are used in the beef programmes. A 20-sow piggery of Berkshire and Large Whites is also run, and there is a fairly large poultry section.

The Old Boys Association has financed a swimming pool at the school, and camping trips are arranged for interested students. School teams participate in association basketball and hockey competitions, and a Saturday morning football competition involves three school teams.